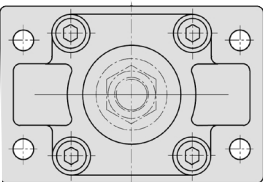
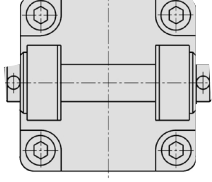
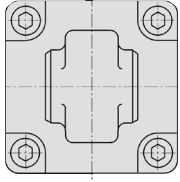
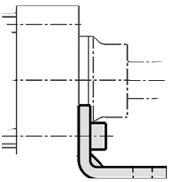
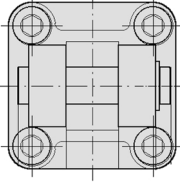
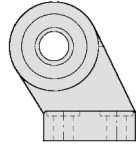
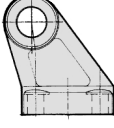


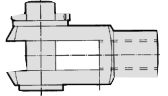
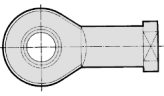
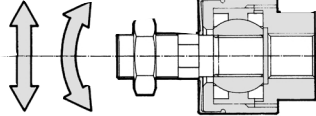
Series CP95

How to order mounting accessories

Mounting accessories, cylinders

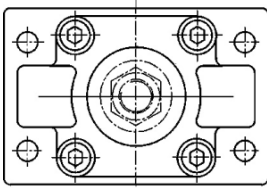
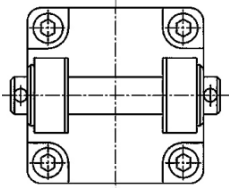
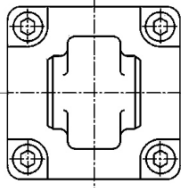
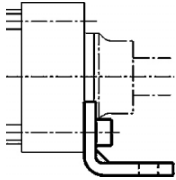
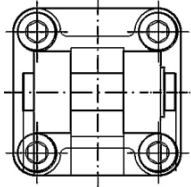
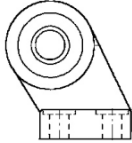
Ø bore	F Front/rear flange	D Female rear clevis (corresponds to E accessories)	C Male rear clevis	
	 Supplied with 4 screws	 Supplied with bolt, safety device and 4 screws	 Supplied with 4 screws	
32 40 50 63 80 100	F5032 F5040 F5050 F5063 F5080 F5100 See page 10 for dimensions	D5032 D5040 D5050 D5063 D5080 D5100 See pages 10/11 for dimensions	<u>Plain</u> C5032 C5040 C5050 C5063 C5080 C5100 See pages 10/11 for dimensions <small>Note: See page 11 for male rear clevis with swivel CR50</small>	
Ø bore	L Foot	DS Female rear clevis (for ES accessory)	ES Angled rear clevis with ball joint	E Angled rear clevis
	 Supplied with two pieces			
32 40 50 63 80 100	L5032 L5040 L5050 L5063 L5080 L5100 See page 10 for dimensions	DS5032 DS5040 DS5050 DS5063 DS5080 DS5100 See page 12 for dim.	ES5032 ES5040 ES5050 ES5063 ES5080 ES5100 See page 12 for dim.	E5032 E5040 E5050 E5063 E5080 E5100 See page 11 for dimensions

Mounting accessories, rod

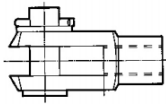
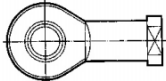
Ø bore	GKM Rod clevis DIN 71752	KJ Piston rod ball joint DIN 648	JA Floating joint
	 Supplied with bolts and safety devices		
32 40 50 63 80 100	GKM 10-20 GKM12-24 GKM16-32 GKM16-32 GKM20-40 GKM20-40 See page 18 for dimensions	KJ10DM10X125 KJ12 D KJ16 D KJ16 D KJ20D KJ20D See page 18 for dimensions	JA30-10-125 JA40-12-125 JA50-16-150 JA50-16-150 JAH50-20-150 JAH50-20-150 See page 18 for dimensions

Accessory

Mounting Accessory, Cylinder

Bore size (mm)	F Rod/Head side flange	D Female head side clevis (Corresponds to E accessories)	C Male head side clevis	
		 <p>Supplied with 4 screws</p>	 <p>Supplied with bolt, safety device and 4 screws</p>	 <p>Supplied with 4 screws</p>
32	<u>Without lock</u>		<u>Plain</u>	
40	F5032	D5032	C5032	
50	F5040	D5040	C5040	
63	F5050	D5050	C5050	
80	F5063	D5063	C5063	
100	F5080	D5080	C5080	
	F5100	D5100	C5100	
			<u>With ball joint</u>	
			CR5032	
			CR5040	
			CR5050	
			CR6063	
			CR5080	
			CR5100	
	See page 6-12-8 and 24 for dimensions.	See pages 6-12-8, 9 and 24 for dimensions	See pages 6-12-8, 9 and 24 for dimensions. <small>Note) See page 6-12-9 for male head side clevis with swivel CR50.</small>	
Bore size (mm)	L Foot	DS Female head side clevis (for ES accessory)	ES Angled head side clevis with ball joint	E Angled head side clevis
		 <p>Supplied with two pieces Supplied with 4 screws</p>		
32	L5032	DS5032	ES5032	E5032
40	L5040	DS5040	ES5040	E5040
50	L5050	DS5050	ES5050	E5050
63	L5063	DS5063	ES5063	E5063
80	L5080	DS5080	ES5080	E5080
100	L5100	DS5100	ES5100	E5100
	See page 6-12-8 and 24 for dimensions.	See page 6-12-10 for dimensions.	See page 6-12-10 for dimensions.	See page 6-12-9 for dimensions.

Mounting Accessory, Rod

Bore size (mm)	GKM Rod clevis ISO 8140	KJ Piston rod ball joint ISO 8139	JA Floating joint
		 <p>Supplied with bolts and safety devices</p>	
32	GKM10-20	KJ10DM10X125	JA30-10-125
40	GKM12-24	KJ12D	JA40-12-125
50	GKM16-32	KJ16D	JA50-16-150
63	GKM16-32	KJ16D	JA50-16-150
80	GKM20-40	KJ20D	JAH50-20-150
100	GKM20-40	KJ20D	JAH50-20-150
	See page 6-12-11 for dimensions.	See page 6-12-11 for dimensions.	See page 6-12-11 for dimensions.

CJ1

CJP

CJ2

CM2

CG1

MB

MB1

CA2

CS1

C76

C85

C95

CP95

NCM

NCA

D-

-X

20-

Data

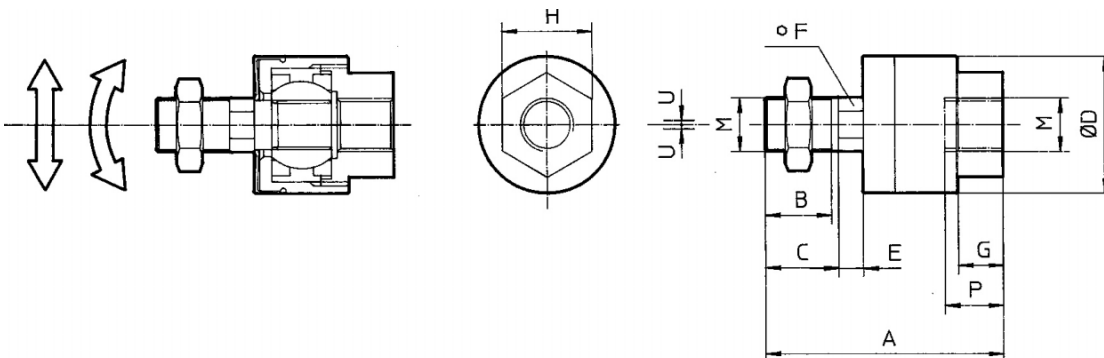
Dimensions: Piston Rod Mounting Accessory

[First angle projection]

Floating Joint JA

Steel

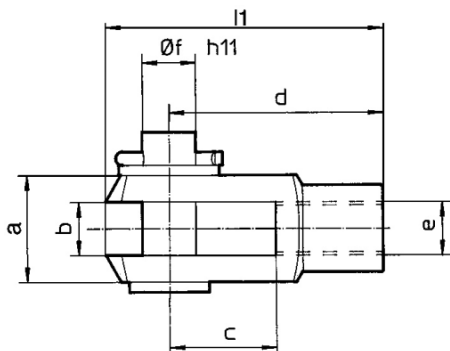
Bore size (mm)	M	Part no.	A	B	C	øD	E	F	G	H	P	U	Load (kN)	Weight (g)	Angle
32	M10 x 1.25	JA30-10-125	49.5	19.5	—	24	5	8	8	17	9	0.5	2.5	70	± 5°
40	M12 x 1.25	JA40-12-125	60	20	—	31	6	11	11	22	13	0.75	4.4	160	
50, 63	M16 x 1.5	JA50-16-150	71.5	22	—	41	7.5	14	13.5	27	15	1.0	11	300	
80, 100	M20 x 1.5	JAH50-20-150	101	28	31	59.5	11.5	24	16	32	18	2.0	18	1080	



Rod Clevis GKM (ISO 8140), Supplied with Bolt and Safety Device

Steel

Bore size (mm)	e	Part no.	b	d	øf _{h11}	l ₁ max.	c min.	a min.
32	M10 x 1.25	GKM10-20	10 ^{+0.50 +0.15}	40	10	52	20	20
40	M12 x 1.25	GKM12-24	12 ^{+0.50 +0.15}	48	12	62	24	24
50, 63	M16 x 1.5	GKM16-32	16 ^{+0.50 +0.15}	64	16	83	32	32
80, 100	M20 x 1.5	GKM20-40	20 ^{+0.60 +0.15}	80	20	105	40	40

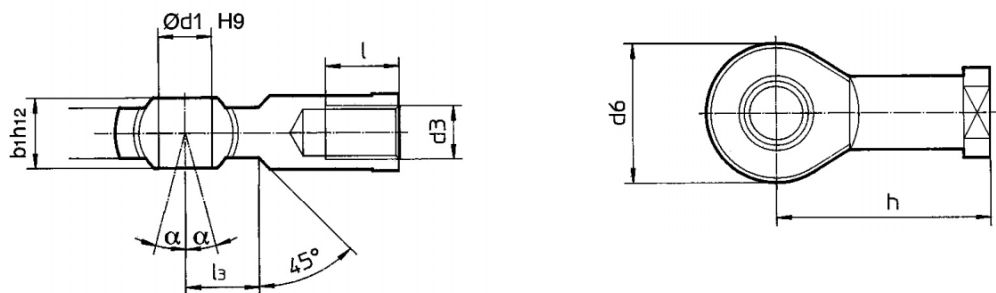


KJ10DM IS NOW □
KJ10DM10X1.25

Piston Rod Ball Joint KJ (ISO 8139)

Steel

Bore size (mm)	d ₃	Part no.	ød _{1H9}	h	d ₆ max.	b _{1h12}	l min.	a	l ₃
32	M10 x 1.25	KJ10D	10	43	28	14	20	13°	14
40	M12 x 1.25	KJ12D	12	50	32	16	22	13°	16
50, 63	M16 x 1.5	KJ16D	16	64	42	21	28	15°	26
80, 100	M20 x 1.5	KJ20D	20	77	50	25	33	15°	26



CJ1

CJP

CJ2

CM2

CG1

MB

MB1

CA2

CS1

C76

C85

C95

CP95

NCM

NCA

D-

-X

20-

Data

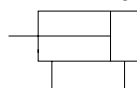
Specifications



Bore size (mm)	32	40	50	63	80	100
Action	Double acting single rod					
Direction of low friction	One direction					
Fluid	Air					
Proof pressure	1.05MPa					
Max. operating pressure	0.7MPa					
Min. operating pressure	0.01MPa					
Ambient and fluid temperature	Without auto switch: -10 to 70°C (No freezing)					
	With auto switch: -10 to 60°C (No freezing)					
Lubrication	Not required (Non-lube)					
Cushion	None					
Port size	Rc(PT)1/8	Rc(PT)1/4	Rc(PT)1/4	Rc(PT)3/8	Rc(PT)3/8	Rc(PT)1/2
Mounting	Basic, Foot, Front flange, Rear flange, Single clevis, Double clevis, Centre trunnion, spherical bearing					

Standard Stroke

ISO Symbol
Double acting



Bore size (mm)	Standard stroke (mm)	Max. * stroke
32	25, 50, 80, 100, 125, 160, 200, 250, 320, 400, 500	1000
40	25, 50, 80, 100, 125, 160, 200, 250, 320, 400, 500	1000
50	25, 50, 80, 100, 125, 160, 200, 250, 320, 400, 500, 600	1000
63	25, 50, 80, 100, 125, 160, 200, 250, 320, 400, 500, 600	1000
80	25, 50, 80, 100, 125, 160, 200, 250, 320, 400, 500, 600	1000
100	25, 50, 80, 100, 125, 160, 200, 250, 320, 400, 500, 600	1000

Intermediate strokes are available.

Part No: Mounting Bracket, Mounting Accessories

Description	Bore size	ø32	ø40	ø50	ø63	ø80	ø100
L	Foot ⁽¹⁾	L5032	L5040	L5050	L5063	L5080	L5100
F,G	Flange	F5032	F5040	F5050	F5063	F5080	F5100
C	Single rear clevis	C5032	C5040	C5050	C5063	C5080	C5100
D	Double rear clevis	D5032	D5040	D5050	D5063	D5080	D5100
DS	Double rear clevis (for ES accessory)	DS5032	DS5040	DS5050	DS5063	DS5080	DS5100
ES	Angled rear clevis with ball joint	ES5032	ES5040	ES5050	ES5063	ES5080	ES5100
E	Angled rear clevis	E5032	E5040	E5050	E5063	E5080	E5100
C95-S	Trunnion pivot bracket	C95-S03	C95-S04	C95-S04	C95-S06	C95-S06	C95-S10
GKM	Rod clevis	GKM10-20	GKM12-24	GKM16_32	GKM16-32	GKM20-40	GKM20-40
KJ	Piston rod ball joint	KJ10D	KJ12D	KJ16D	KJ16D	KJ20D	KJ20D
JA	Floating joint	JA30-10-125	JA40-12-125	JA50-16-150	JA50-16-150	JAH50-20-150	JAH50-20-150

KJ10D IS NOW □
KJ10DM10X1.25

Note 1) Two foot brackets required for one cylinder.

Note 2) Accessories for each mounting bracket are as follows.

Foot, Flange, Single clevis: Mounting bolts

Double rear clevis: (D,DS): Clevis pin

Note 3) C95-S: Set of 2 pcs.

Note 4) GKM according to ISO 8140

Note 5) KJ according to ISO 8139

Note 6) Piston rod nut is standard