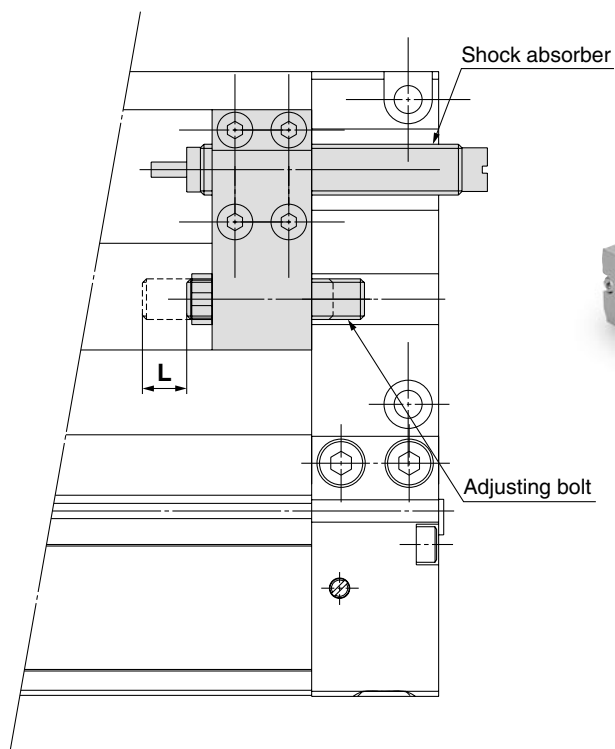


Mechanically Jointed Rodless Cylinder Series MY2H/MY2HT

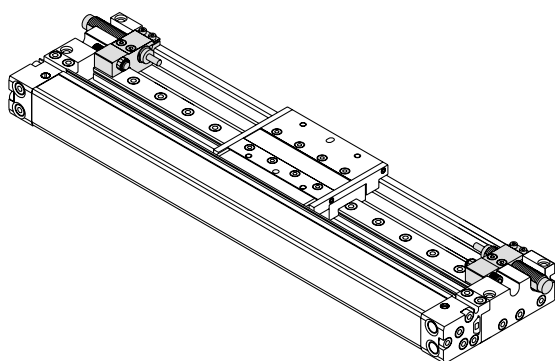
-XB20: Stroke adjusting unit with adjusting bolt specifications



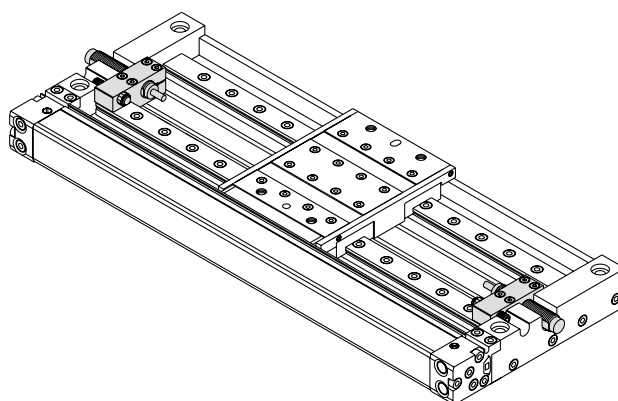
Stroke adjustment range for adjusting bolt

| Bore size (mm) | L | mm |
|----------------|------|----|
| 16 | 5.6 | |
| 25 | 11.5 | |
| 40 | 16 | |

❖ **MY2H: One linear guide**
 ø16, ø25, ø40



❖ **MY2HT: Two linear guides**
 ø16, ø25, ø40



Series MY2H/MY2HT

How to Order (Refer to Best Pneumatics for specifications details.)

Linear Guide Type MY2 H 16 G - 300 L - M9BW - XB20

Guide type

| | |
|----|-------------------|
| H | One linear guide |
| HT | Two linear guides |

Bore size

| | |
|----|-------|
| 16 | 16 mm |
| 25 | 25 mm |
| 40 | 40 mm |

Thread type

| Symbol | Type | Bore size |
|--------|----------|-----------|
| - | M thread | ø16 |
| | Rc | |
| TN | NPT | ø25, ø40 |
| TF | G | |

Piping

| | |
|---|------------------------------------|
| G | Centralised piping type (Standard) |
|---|------------------------------------|

Stroke (mm)

| Bore size (mm) | Standard stroke (mm) ^{Note)} | Maximum available stroke (mm) |
|----------------|---|-------------------------------|
| 16 | 50, 100, 150, 200, 250, 300, 350, 400, 450, 500, 550, 600 | 1000 |
| 25, 40 | | 1500 |

Stroke adjusting unit with adjusting bolt specifications

Number of auto switches

| | |
|---|----------|
| - | 2 pcs. |
| S | 1 pc. |
| n | "n" pcs. |

Auto switches

| | |
|---|---------------------------------------|
| - | Without auto switch (built-in magnet) |
|---|---------------------------------------|

Note) For the applicable auto switch model, refer to table below.

Stroke adjusting unit position

| | |
|---|-----------|
| - | Both ends |
| S | One end |

Note) "S" is applicable for stroke adjusting units L and H.

Stroke adjusting unit

| | |
|----|-------------------------------------|
| - | Without adjusting unit |
| L | With low load shock absorber |
| H | With high load shock absorber |
| LH | With one L unit and one H unit each |

Note) Strokes can be manufactured in 1 mm increments, up to the maximum stroke. However, add "-XB10" to the end of the model number for non-standard strokes from 51 to 599. Also when exceeding a 600 mm stroke, specify "-XB11" at the end of the model number. Refer to Made to Order Specifications (Best Pneumatics).

Shock absorbers for L and H units

| Model | Bore size Unit type (mm) | Bore size (mm) | | |
|-------|--------------------------|----------------|--------|--------|
| | | 16 | 25 | 40 |
| MY2H | L unit | RB0806 | RB1007 | RB1412 |
| | H unit | RB1007 | RB1412 | RB2015 |
| MY2HT | L unit | RB1007 | RB1412 | RB2015 |
| | H unit | RB1412 | RB2015 | RB2725 |

Applicable Auto Switch / Refer to Best Pneumatics for detailed specifications about an auto switch itself.

| Type | Special function | Electrical entry | Indicator light | Wiring (Output) | Load voltage | | Auto switch model | | Lead wire length (m) | | | | Pre-wire connector | Applicable load | | | |
|--------------------|---|------------------|-----------------|---------------------|--------------|-----------|-------------------|---------------|----------------------|-------|-------|-------|--------------------|-----------------|------------|------------|------------|
| | | | | | DC | AC | Perpendicular | In-line | 0.5 (-) | 1 (M) | 3 (L) | 5 (Z) | | | | | |
| Solid state switch | Diagnostic indication (2-colour indication) | Grommet | Yes | 3-wire (NPN) | 24 V | 5 V, 12 V | - | M9NV | M9N | ● | — | ● | ○ | ○ | IC circuit | Relay, PLC | |
| | | | | 3-wire (PNP) | | | | M9PV | M9P | ● | — | ● | ○ | ○ | | | |
| | | | | 2-wire | | | | M9BV | M9B | ● | — | ● | ○ | ○ | | | — |
| | | | | 3-wire (NPN) | | | | M9NWV | M9NW | ● | ● | ● | ○ | ○ | | | IC circuit |
| | | | | 3-wire (PNP) | | | | M9PWV | M9PW | ● | ● | ● | ○ | ○ | | | — |
| | | | | 2-wire | | | | M9BWV | M9BW | ● | ● | ● | ○ | ○ | | | — |
| Reed switch | - | Grommet | Yes | 3-wire (NPN equiv.) | 24 V | 5 V | - | A96V | A96 | ● | — | ● | — | — | IC circuit | — | |
| | | | | 2-wire | | | | 100 V | A93V | A93 | ● | — | ● | — | — | — | Relay, PLC |
| | | | | | | | | 100 V or less | A90V | A90 | ● | — | ● | — | — | — | IC circuit |

Note 1) Lead wire length symbols: 0.5 m..... - (Example: M9NW)
 1 m..... M (Example: M9NWM)
 3 m..... L (Example: M9NWL)
 5 m..... Z (Example: M9NWZ)

Note 2) Since there are other applicable auto switches than the ones listed above, refer to Best Pneumatics for details.

Note 3) For details about auto switches with pre-wire connector, refer to Best Pneumatics.

Note 4) Auto switch is shipped together not assembled.

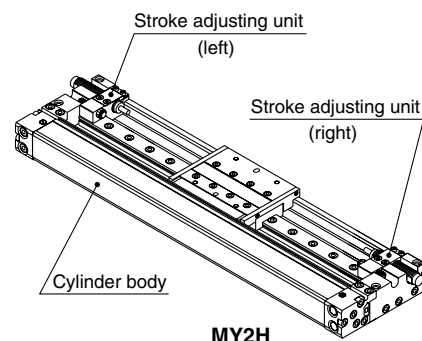
Note 5) Solid state switch marked "O" are produced upon receipt of order.

Stroke Adjusting Unit with Adjusting Bolt Specifications *Series MY2H/MY2HT*

Stroke adjusting unit with adjusting bolt model (order number for unit itself)

| Model | Bore size (mm) | | 16 | 25 | 40 |
|-------|----------------|-------|------------------|------------------|------------------|
| | Unit type | | | | |
| MY2H | L unit | Left | MY2H-A16L1-XB20 | MY2H-A25L1-XB20 | MY2H-A40L1-XB20 |
| | | Right | MY2H-A16L2-XB20 | MY2H-A25L2-XB20 | MY2H-A40L2-XB20 |
| | H unit | Left | MY2H-A16H1-XB20 | MY2H-A25H1-XB20 | MY2H-A40H1-XB20 |
| | | Right | MY2H-A16H2-XB20 | MY2H-A25H2-XB20 | MY2H-A40H2-XB20 |
| MY2HT | L unit | Left | MY2HT-A16L1-XB20 | MY2HT-A25L1-XB20 | MY2HT-A40L1-XB20 |
| | | Right | MY2HT-A16L2-XB20 | MY2HT-A25L2-XB20 | MY2HT-A40L2-XB20 |
| | H unit | Left | MY2HT-A16H1-XB20 | MY2HT-A25H1-XB20 | MY2HT-A40H1-XB20 |
| | | Right | MY2HT-A16H2-XB20 | MY2HT-A25H2-XB20 | MY2HT-A40H2-XB20 |

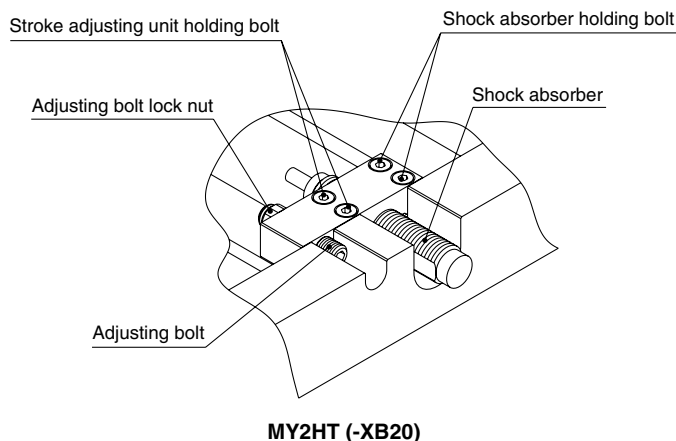
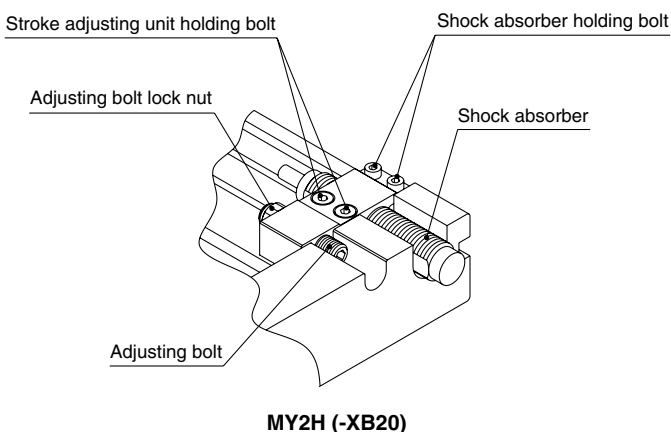
Note) Stroke adjusting unit with adjusting bolt (-XB20) cannot be mounted with the standard cylinder.



⚠ Caution

<Stroke adjustment using the adjusting bolt>

- Loosen adjusting bolt lock nut and adjust the stroke by rotating the adjusting bolt. Then, fix the adjusting bolt by tightening the lock nut. When the effective stroke of the shock absorber decreases as a result of stroke adjustment, the absorption capacity becomes extremely small. Secure the shock absorber in a position where it retracts approximately 0.5 mm from the adjusting bolt, and, uniformly tighten each shock absorber holding bolt with the same torque.

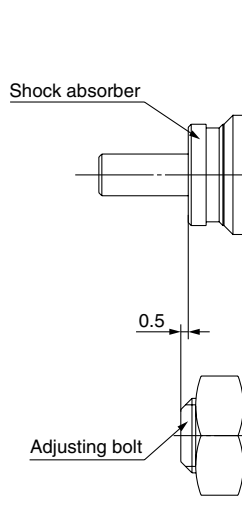


Stroke adjusting unit holding bolt tightening torque $N \cdot m$

| Bore size (mm) | MY2H | | MY2HT | |
|----------------|--------|--------|--------|--------|
| | L unit | H unit | L unit | H unit |
| 16 | | 0.6 | | |
| 25 | | 1.5 | | |
| 40 | | 5.0 | | |

Shock absorber holding bolt tightening torque $N \cdot m$

| Bore size (mm) | MY2H | | MY2HT | |
|----------------|--------|--------|--------|--------|
| | L unit | H unit | L unit | H unit |
| 16 | | 0.6 | | |
| 25 | 1.5 | 0.6 | 1.5 | |
| 40 | 5.0 | 1.5 | 5.0 | |



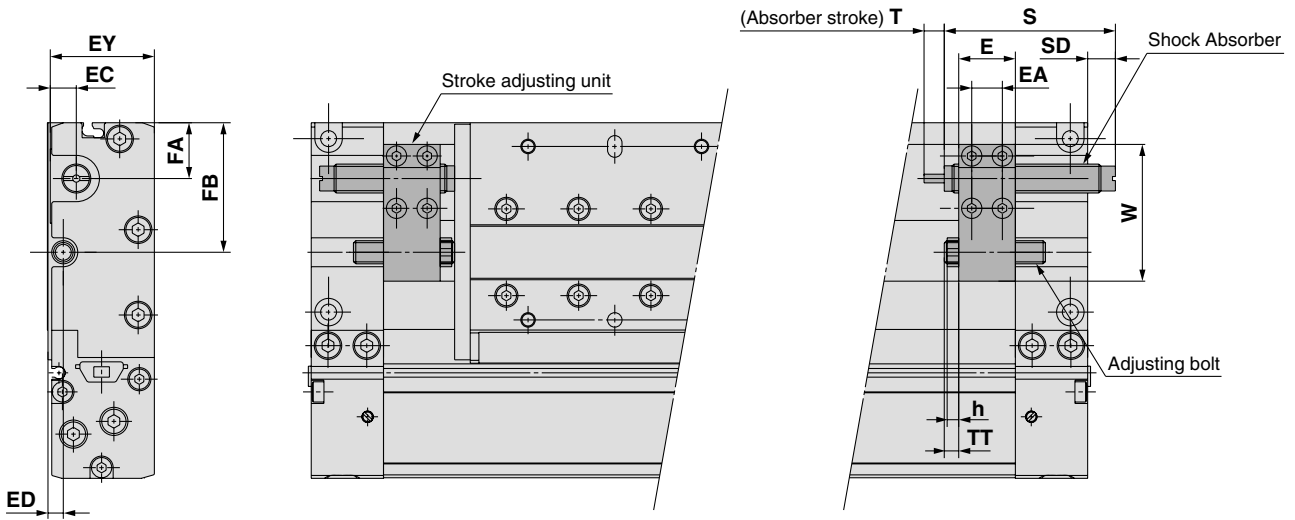
- When the shock absorber is used within the air cushion stroke range, the cylinder may not operate smoothly due to bouncing depending on the degree the cushion adjustment part opens. Be careful and avoid over-tightening the cushion needle.

Series MY2H/MY2HT

Dimensions (Refer to the Best Pneumatics for other dimensions)

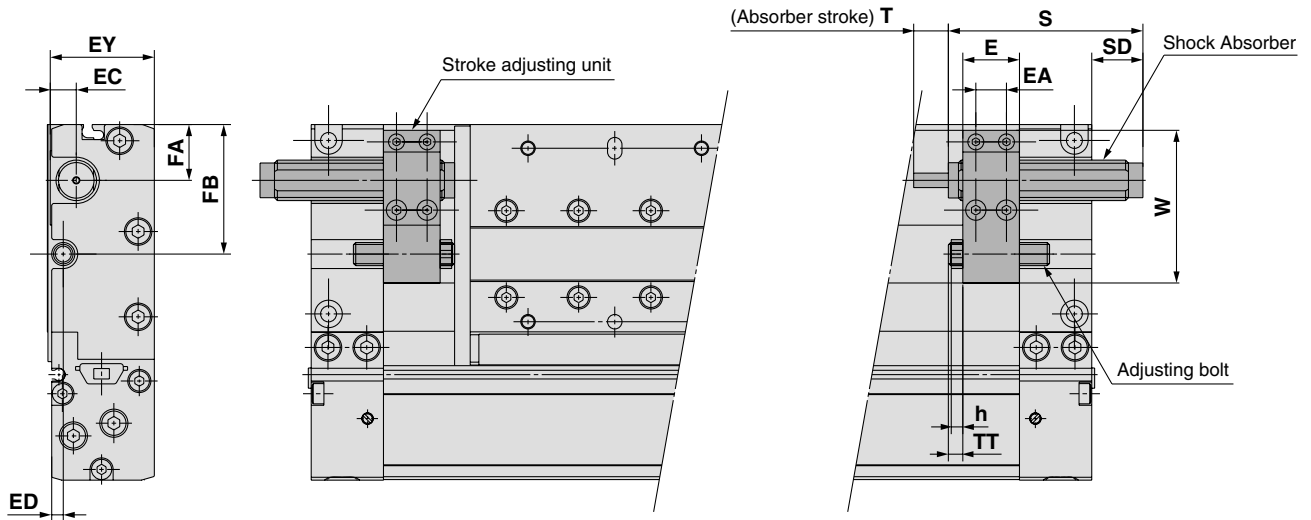
Unit: mm

MY2H L Unit



| Applicable cylinder | E | EA | EC | ED | EY | FA | FB | h | S | T | SD | TT | W | Shock absorber type | Adjusting bolt | Adjustment range |
|---------------------|------|------|-----|-----|----|------|------|-----|------|----|-----|----------------|------|---------------------|-----------------|------------------|
| MY2H16 | 15.8 | 8.4 | 6.2 | 5 | 28 | 12.4 | 30 | 3.2 | 40.8 | 6 | 1.3 | 4.2 (MAX. 9.8) | 34.5 | RB0806 | M5 x 0.8 x 25L | 5.6 |
| MY2H25 | 19.6 | 10.6 | 10 | 5.5 | 37 | 19.3 | 44.8 | 4 | 46.7 | 7 | — | 5 (MAX. 16.5) | 47.3 | RB1007 | M8 x 1.0 x 35L | 11.5 |
| MY2H40 | 29 | 16 | 13 | 8 | 57 | 17 | 49 | 5 | 67.3 | 12 | — | 6 (MAX. 22) | 59 | RB1412 | M10 x 1.0 x 50L | 16 |

MY2H H Unit



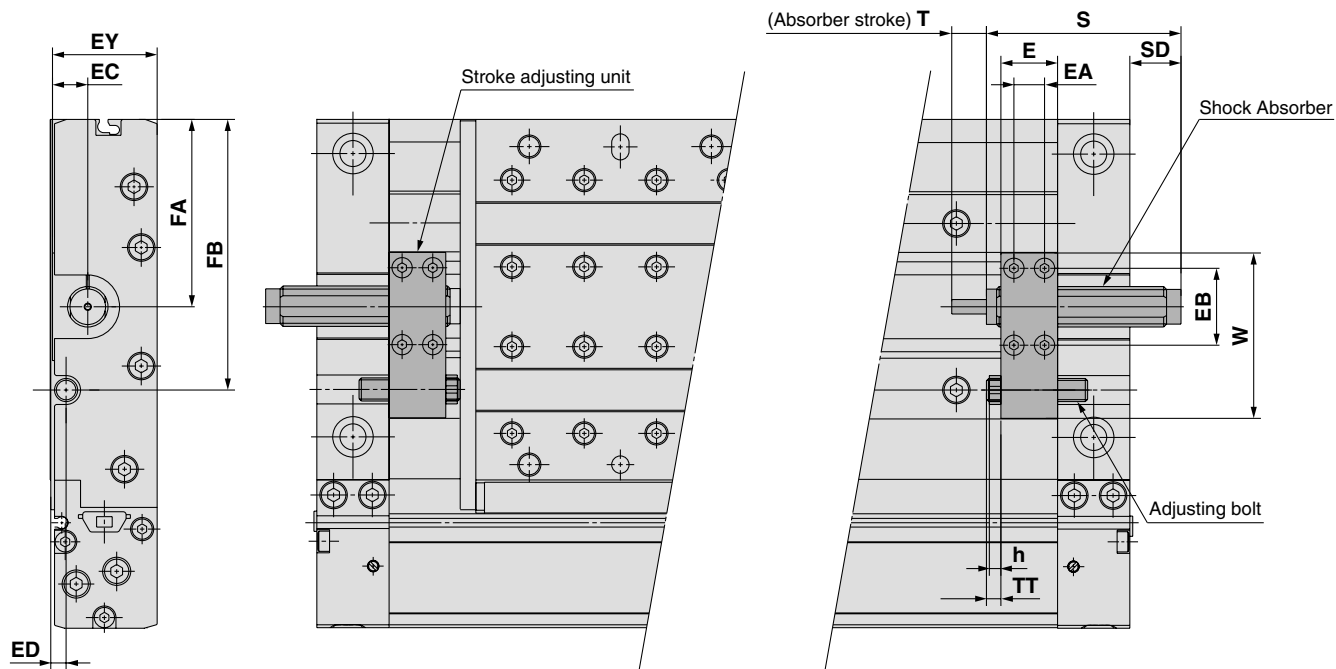
| Applicable cylinder | E | EA | EC | ED | EY | FA | FB | h | S | SD | T | TT | W | Shock absorber type | Adjusting bolt | Adjustment range |
|---------------------|------|------|-----|-----|----|------|------|-----|------|------|----|----------------|------|---------------------|-----------------|------------------|
| MY2H16 | 15.8 | 8.4 | 6.2 | 5 | 28 | 12.4 | 30 | 3.2 | 46.7 | 7.2 | 7 | 4.2 (MAX. 9.8) | 35.5 | RB1007 | M5 x 0.8 x 25L | 5.6 |
| MY2H25 | 19.6 | 10.6 | 10 | 5.5 | 37 | 19.3 | 44.8 | 4 | 67.3 | 18.2 | 12 | 5 (MAX. 16.5) | 52.8 | RB1412 | M8 x 1.0 x 35L | 11.5 |
| MY2H40 | 29 | 16 | 13 | 8 | 57 | 17 | 49 | 5 | 73.2 | — | 15 | 6 (MAX. 22) | 59 | RB2015 | M10 x 1.0 x 50L | 16 |

Stroke Adjusting Unit with Adjusting Bolt Specifications *Series MY2H/MY2HT*

Dimensions (Refer to the Best Pneumatics for other dimensions)

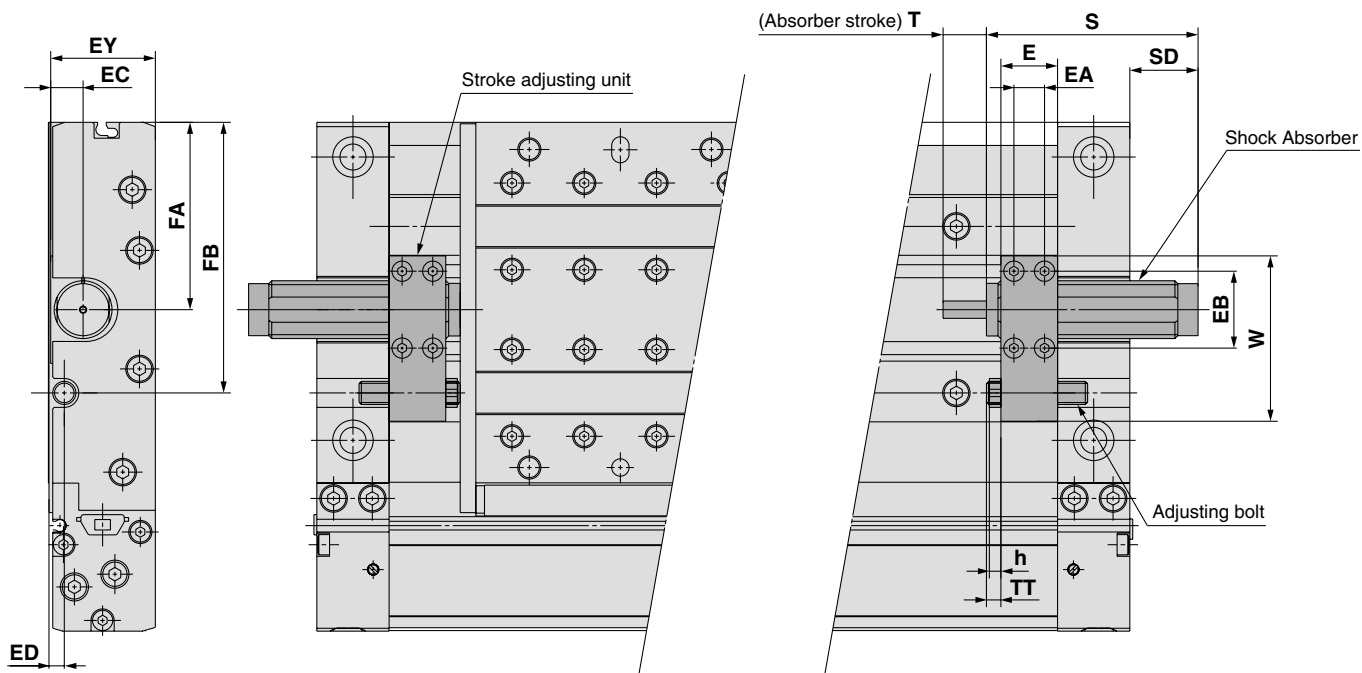
Unit: mm

MY2HT L Unit



| Applicable cylinder | E | EA | EB | EC | ED | EY | FA | FB | h | S | SD | T | TT | W | Shock absorber type | Adjusting bolt | Adjustment range |
|---------------------|------|------|------|------|-----|----|------|-------|-----|------|------|----|----------------|------|---------------------|-----------------|------------------|
| MY2HT16 | 15.8 | 8.4 | 21 | 9 | 5 | 28 | 46.5 | 67 | 3.2 | 46.7 | 7.2 | 7 | 4.2 (MAX. 9.8) | 40.6 | RB1007 | M5 x 0.8 x 25L | 5.6 |
| MY2HT25 | 19.6 | 10.6 | 26.6 | 12.2 | 5.5 | 37 | 64.8 | 93.6 | 4 | 67.3 | 18.2 | 12 | 5 (MAX. 16.5) | 57.2 | RB1412 | M8 x 1.0 x 35L | 11.5 |
| MY2HT40 | 29 | 16 | 37 | 18.2 | 8 | 58 | 74.5 | 110.5 | 5 | 73.2 | — | 15 | 6 (MAX. 22) | 71.6 | RB2015 | M10 x 1.0 x 50L | 16 |

MY2HT H Unit



| Applicable cylinder | E | EA | EB | EC | ED | EY | FA | FB | h | S | SD | T | TT | W | Shock absorber type | Adjusting bolt | Adjustment range |
|---------------------|------|------|------|------|-----|----|------|-------|-----|------|------|----|----------------|------|---------------------|-----------------|------------------|
| MY2HT16 | 15.8 | 8.4 | 21 | 9 | 5 | 28 | 46.5 | 67 | 3.2 | 67.3 | 27.8 | 12 | 4.2 (MAX. 9.8) | 40.6 | RB1412 | M5 x 0.8 x 25L | 5.6 |
| MY2HT25 | 19.6 | 10.6 | 26.6 | 12.2 | 5.5 | 37 | 64.8 | 93.6 | 4 | 73.2 | 24.1 | 15 | 5 (MAX. 16.5) | 57.2 | RB2015 | M8 x 1.0 x 35L | 11.5 |
| MY2HT40 | 29 | 16 | 37 | 18.2 | 8 | 58 | 74.5 | 110.5 | 5 | 99 | 24.5 | 25 | 6 (MAX. 22) | 71.6 | RB2725 | M10 x 1.0 x 50L | 16 |

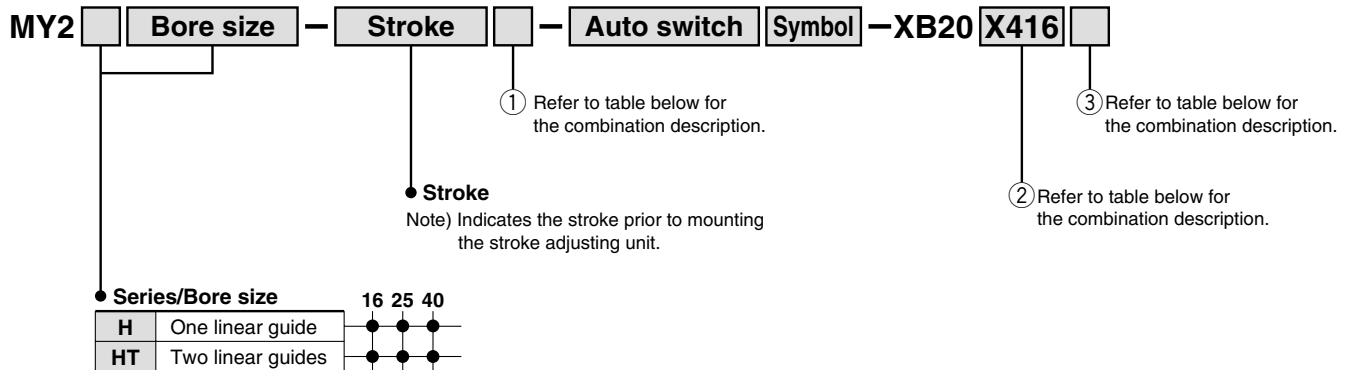
Series MY2H/MY2HT

Holder Mounting Bracket for XB20 ①, ②

Holder mounting brackets are used to fasten the stroke adjusting unit with the adjusting bolt (-XB20) at an intermediate stroke position.

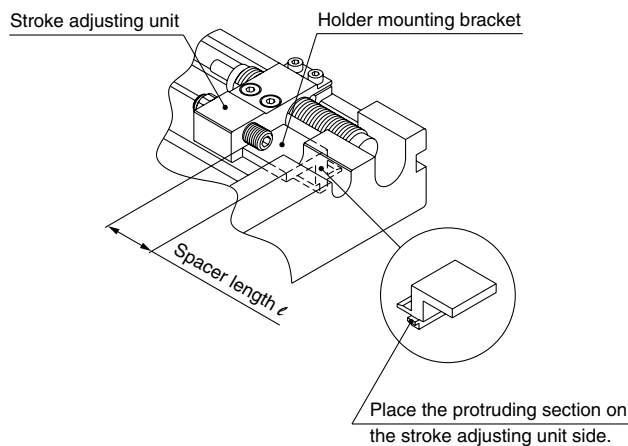
Holder mounting bracket ① -X416

Holder mounting bracket ② -X417

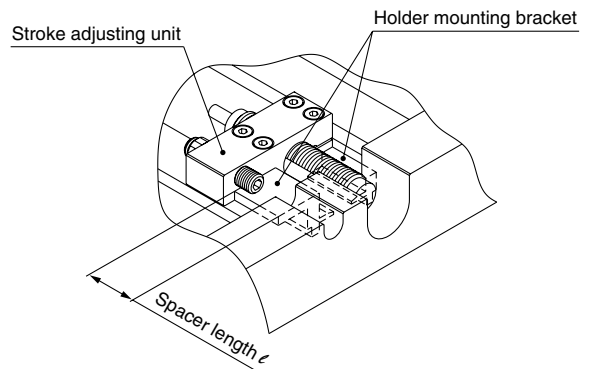


| ① Stroke adjusting unit | ② Holder mounting bracket | ③ Combination symbol | Mounting pcs. | | Combination description |
|-------------------------|---------------------------|----------------------|---------------|---|---|
| | | | X416 | X417 | |
| L, H, LS, HS | X416 | - | 1 | — | X416 on one side |
| L, H | | W | 2 | — | X416 on both sides |
| LH | | Z | 1 | 1 | X416 on one side, X417 on the other side |
| | | L | 1 | — | X416 on L unit side |
| | | H | 1 | — | X416 on H unit side |
| | | LZ | 1 | 1 | X416 on L unit side, X417 on the other side |
| HZ | | 1 | 1 | X416 on H unit side, X417 on the other side | |
| L, H, LS, HS | X417 | - | — | 1 | X417 on one side |
| L, H | | W | — | 2 | X417 on both sides |
| LH | | L | — | 1 | X417 on L unit side |
| | | H | — | 1 | X417 on H unit side |

MY2H (-XB20)

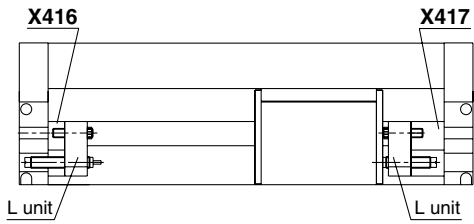


MY2HT (-XB20)

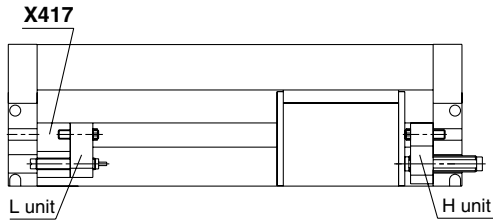


Examples of Made to Order: Holder Mounting Bracket for XB20 ①, ②

- L units with one each of X416 and X417
MY2H25G-300L-XB20X416Z



- L and H units, where X417 is mounted on L unit only and nothing on H unit.
MY2H25G-300LH-XB20X417L



How to order single pieces of stroke adjusting unit with adjusting bolt and holder mounting bracket

MY2H-A16L1-XB20
MY2HT-A16L1-XB20

X417 □

● **Combination symbol**

| | |
|---|---|
| - | Stroke adjusting unit + Holder mounting bracket |
| N | Holder mounting bracket only |

● **Holder mounting bracket**

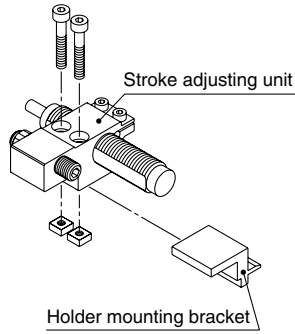
| | |
|------|---------------------------|
| X416 | Holder mounting bracket 1 |
| X417 | Holder mounting bracket 2 |

● **Stroke adjusting unit with adjusting bolt**

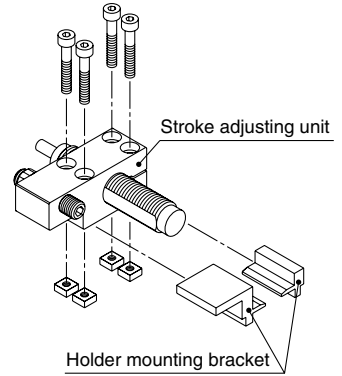
- Stroke adjusting unit with holder mounting bracket (right)
MY2H-A25L2-XB20X416 (L unit for MY2H25 and X416 bracket)

- Holder mounting bracket only (right)
MY2H-A25L2-XB20X416N (MY2H25, X416 bracket for L unit)

MY2H (-XB20)



MY2HT (-XB20)



Note) For MY2H, the parts are packed together when shipped.

SMC CORPORATION (Europe)

| | | | |
|-----------------------|---------------------|--------------------------|----------------------------|
| Austria | ☎ +43 226262280 | www.smc.at | office@smc.at |
| Belgium | ☎ +32 (0)33551464 | www.smc-pneumatics.be | post@smcpneumatics.be |
| Bulgaria | ☎ +359 2 9744492 | www.smc.bg | office@smc.bg |
| Croatia | ☎ +385 1 377 66 74 | www.smc.hr | office@smc.hr |
| Czech Republic | ☎ +42 0541424611 | www.smc.cz | office@smc.cz |
| Denmark | ☎ +45 70252900 | www.smc.dk | smc@smc-pneumatik.dk |
| Estonia | ☎ +372 6510370 | www.smc-pneumatics.ee | smc@smcpneumatics.ee |
| Finland | ☎ +358 207 513513 | www.smc.fi | smcfin@smc.fi |
| France | ☎ +33 (0)164761000 | www.smc-france.fr | contact@smc-france.fr |
| Germany | ☎ +49 (0)61034020 | www.smc-pneumatik.de | info@smc-pneumatik.de |
| Greece | ☎ +30-210-2717265 | www.smchellas.gr | sales@smchellas.gr |
| Hungary | ☎ +36 13711343 | www.smc.hu | office@smc.hu |
| Ireland | ☎ +353 (0)14039000 | www.smc-pneumatics.ie | sales@smcpneumatics.ie |
| Italy | ☎ +39 (0)292711 | www.smcitalia.it | mailbox@smcitalia.it |
| Latvia | ☎ +371 (0)7779474 | www.smc.lv | info@smclv.lv |
| Lithuania | ☎ +370 5 264 81 26 | | |
| Netherlands | ☎ +31 (0)205318888 | www.smc-pneumatics.nl | info@smcpneumatics.nl |
| Norway | ☎ +47 67129020 | www.smc-norge.no | post@smc-norge.no |
| Poland | ☎ +48 222119600 | www.smc.pl | office@smc.pl |
| Portugal | ☎ +351 226108922 | www.smces.es | postpt@smc.smces.es |
| Romania | ☎ +40 213205111 | www.smcromania.ro | smcromania@smcromania.ro |
| Russia | ☎ +7 812 1185445 | www.smc-pneumatik.ru | marketing@smc-pneumatik.ru |
| Slovakia | ☎ +421 244456725 | www.smc.sk | office@smc.sk |
| Slovenia | ☎ +386 73885412 | www.smc.si | office@smc.si |
| Spain | ☎ +34 945184100 | www.smces.es | post@smc.smces.es |
| Sweden | ☎ +46 (0)86031200 | www.smc.se | post@smcpneumatics.se |
| Switzerland | ☎ +41 (0)523963131 | www.smc.ch | info@smc.ch |
| Turkey | ☎ +90 (0)2124440762 | www.entek.com.tr | smc@entek.com.tr |
| UK | ☎ +44 (0)8001382930 | www.smc-pneumatics.co.uk | sales@smcpneumatics.co.uk |

European Marketing Centre ☎ +34 945184100
SMC CORPORATION ☎ +81 0335022740

www.smc.eu
www.smcworld.com

SMC CORPORATION Akihabara UDX 15F, 4-14-1, Sotokanda, Chiyoda-ku, Tokyo 101-0021, JAPAN Phone: 03-5207-8249 FAX: 03-5298-5362