
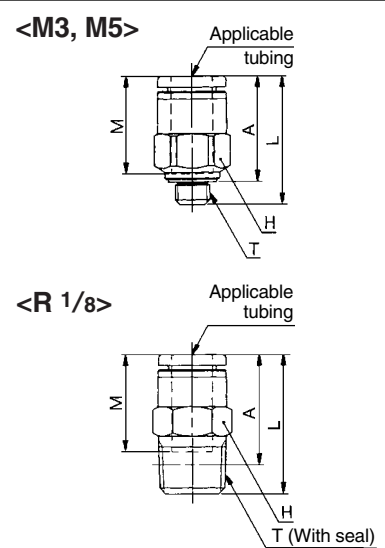


Series KJ


Male Connector: KJH

<M3, M5>	Applicable tubing O.D. (mm)	Connection thread T	Model	H (width across flats)	L	A	M	Effective area (mm ²)		Weight (g)
								Nylon	Urethane	
	3.2	M3 x 0.5	KJH23-M3	7	16.3	13.7	12.7	0.9	0.9	1.6
		M5 x 0.8	KJH23-M5		16.7	13.6		2		
		R 1/8	KJH23-01S	10	13.8	9.8*	3	2.5	4.7	
<R 1/8>	4	M3 x 0.5	KJH04-M3	8	16.3	13.7	12.7	0.9	0.9	1.9
		M5 x 0.8	KJH04-M5		17	13.9		2.4		
		R 1/8	KJH04-01S	10	14.8	10.8*	4	4	4.6	
	6	M5 x 0.8	KJH06-M5	10	17.8	14.7	13.5	4	4	3.3
		R 1/8	KJH06-01S		19.4	15.4*		10	10	5.2

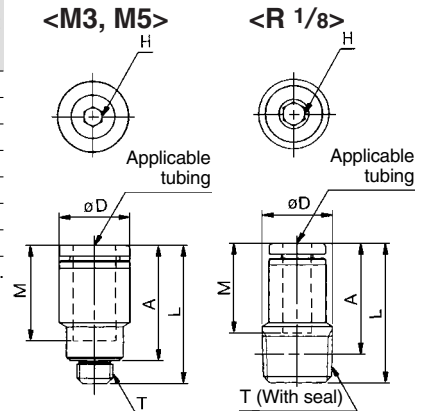
* Reference dimensions after R thread installation.



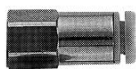
Hexagon Socket Head Male Connector: KJS

<M3, M5>	Applicable tubing O.D. (mm)	Connection thread T	Model	H (width across flats)	Note) ϕD	L	A	M	Effective area (mm ²)		Weight (g)
									Nylon	Urethane	
	3.2	M3 x 0.5	KJS23-M3	1.5	7	16.3	13.7	12.7	1.4	1.4	1.3
		M5 x 0.8	KJS23-M5	2		19.7	16.6		2.5	2.5	2.8
		R 1/8	KJS23-01S	3	9.8	19.7	15.7*	4	4	5.4	
<R 1/8>	4	M3 x 0.5	KJS04-M3	1.5	8	16.3	13.7	12.7	1.4	1.4	1.6
		M5 x 0.8	KJS04-M5	2.5		18.7	15.6		2.7		
		R 1/8	KJS04-01S	3	9.8	19.7	15.7*	4	4	5.4	
	6	M5 x 0.8	KJS06-M5	2.5	10	19.5	16.4	13.5	4	4	3.3
		R 1/8	KJS06-01S	4		20	16*		10	10	5.2

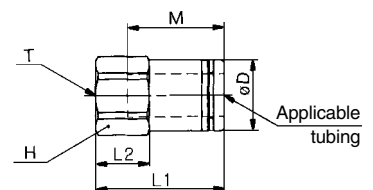
* Reference dimensions after R thread installation. Note) ϕD : Max. diameter




Female Connector: KJF

	Applicable tubing O.D. (mm)	Connection thread T	Model	H (width across flats)	Note) ϕD	L1	L2	M	Effective area (mm ²)		Weight (g)
									Nylon	Urethane	
	3.2	M3 x 0.5	KJF23-M3	7	7	16.5	6.8	12.7	3	2.5	2.6
		M5 x 0.8	KJF23-M5			18.8	7.9		2.8		
	4	M3 x 0.5	KJF04-M3	8	8	16.1	6.4	12.7	4	4	3.2
		M5 x 0.8	KJF04-M5			18.7	7.8		3.8		
	6	M5 x 0.8	KJF06-M5	10	10	18	7.5	13.5	10	10	5.3

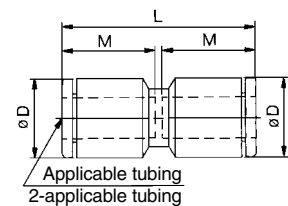
Note) ϕD : Max. diameter




Straight Union: KJH

	Applicable tubing O.D. (mm)	Model	Note) ϕD	L	M	Effective area (mm ²)		Weight (g)
						Nylon	Urethane	
	3.2	KJH23-00	8.4	26.3	12.7	3	2.5	1.4
	4	KJH04-00	9.3	26.3	12.7	4	4	1.7
	6	KJH06-00	11.6	28	13.5	10	10	2.5

Note) ϕD : Max. diameter

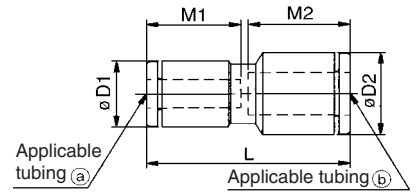


Different Diameter Straight: KJH



Applicable tubing O.D. (mm)		Model	Note) $\phi D1$	Note) $\phi D2$	L	M1	M2	Effective area (mm ²)		Weight (g)
(a)	(b)							Nylon	Urethane	
3.2	4	KJH23-04	8.4	9.3	26.3	12.7	12.7	3	2.5	1.6
	6	KJH23-06		11.6			27.2			13.5
4	6	KJH04-06	9.3	11.6	27.2	12.7	13.5	4	4	2.2

Note) $\phi D1, \phi D2$: Max. diameter



Male Elbow: KJL

<M3, M5>



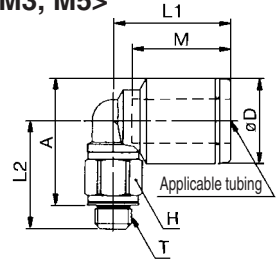
<R 1/8>



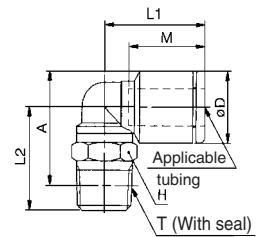
Applicable tubing O.D. (mm)	Connection threads T	Model	H (width across flats)	Note) ϕD	L1	L2	A	M	Effective area (mm ²)		Weight (g)			
									Nylon	Urethane				
3.2	M3 x 0.5	KJL23-M3	7	8.4	15.3	12.5	14.1	12.7	0.8	0.8	2.1			
	M5 x 0.8	KJL23-M5							2.6	2.2	2.5			
	R 1/8	KJL23-01S							15.2	15.4*	6.7			
4	M3 x 0.5	KJL04-M3	7	9.3	15.6	13	15.1	12.7	0.8	0.8	2.2			
	M5 x 0.8	KJL04-M5							3.5	3.5	2.7			
	R 1/8	KJL04-01S							15.7	16.4*	6.8			
6	M5 x 0.8	KJL06-M5	7	11.6	16.1	14.7	17.4	13.5	3.5	3.5	3.2			
	R 1/8	KJL06-01S							17.8	16.7	18.5*	9	9	6.4

* Reference dimensions after R thread installation.
Note) ϕD : Max. diameter

<M3, M5>



<R 1/8>

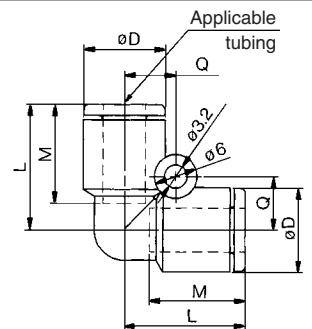


Union Elbow: KJL



Applicable tubing O.D. (mm)	Model	Note) ϕD	L	Q	M	Effective area (mm ²)		Weight (g)
						Nylon	Urethane	
3.2	KJL23-00	8.4	15	5.8	12.7	2.6	2.2	1.6
4	KJL04-00	9.3	15.8	6.3	12.7	3.5	3.5	2
6	KJL06-00	11.6	17.1	7.3	13.5	9	9	3.1

Note) ϕD : Max. diameter

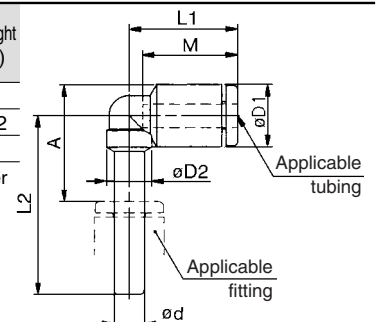


Plug-in Elbow: KJL



Applicable tubing O.D. (mm)	Applicable fitting size ϕd	Model	Note) $\phi D1$	$\phi D2$	L1	L2	A	M	Effective area (mm ²)		Weight (g)
									Nylon	Urethane	
3.2	3.2	KJL23-99	8.4	6	14.5	23.8	15.3	12.7	2.6	2.2	1
4	4	KJL04-99	9.3	6	15.6	24.7	16.7	12.7	3.5	3.5	1.2
6	6	KJL06-99	11.6	7	16.3	26.8	19.1	13.5	9	9	2

Note) $\phi D1$: Max. diameter



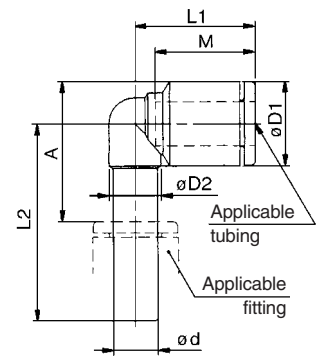
Series KJ

Reducer Elbow: KJL



Applicable tubing O.D. (mm)	Applicable fitting size ϕd	Model	(Note) $\phi D1$	$\phi D2$	L1	L2	A	M	Effective area (mm ²)		Weight (g)
									Nylon	Urethane	
3.2	4	KJL23-04	8.4	6	14.5	24.3	15.8	12.7	2.6	2.2	1.1
	6	KJL23-06				25.3	16				1.2
4	6	KJL04-06	9.3	6	15.6	25.7	16.9	12.7	3.5	3.5	1.4

Note) $\phi D1$: Max. diameter



Extended Male Elbow: KJW

<M3, M5>



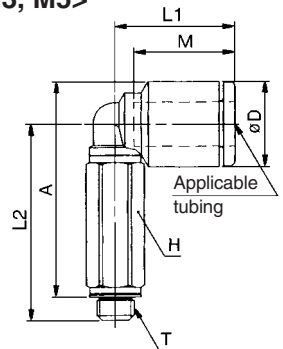
<R 1/8>



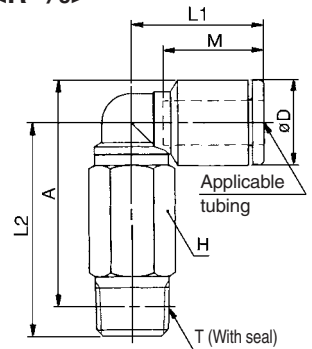
Applicable tubing O.D. (mm)	Connection thread T	Model	H (width across flats)	(Note) ϕD	L1	L2	A	M	Effective area (mm ²)		Weight (g)
									Nylon	Urethane	
3.2	M3 x 0.5	KJW23-M3	7	8.4	15.3	22.5	24.1	12.7	0.8	0.8	5
	M5 x 0.8	KJW23-M5	10			25.2	26.3		2.6	2.2	6.2
	R 1/8	KJW23-01S	10			25.4*	25.4*		13.4		
4	M3 x 0.5	KJW04-M3	7	9.3	15.6	23	25.1	12.7	0.8	0.8	5.1
	M5 x 0.8	KJW04-M5	10			25.7	27.3		3.5	3.5	6.4
	R 1/8	KJW04-01S	10			26.4*	26.4*		13.6		
6	M5 x 0.8	KJW06-M5	7	11.6	16.1	26.7	29.4	13.5	3.5	3.5	6.9
	R 1/8	KJW06-01S	10		17.8	28.7	30.5*		9	9	13.2

* Reference dimensions after R thread installation.
Note) ϕD : Max. diameter

<M3, M5>



<R 1/8>

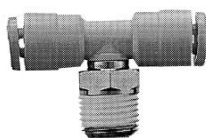


Male Branch Tee: KJT

<M3, M5>



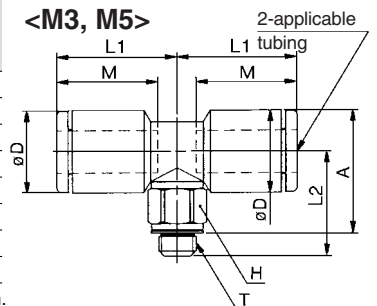
<R 1/8>



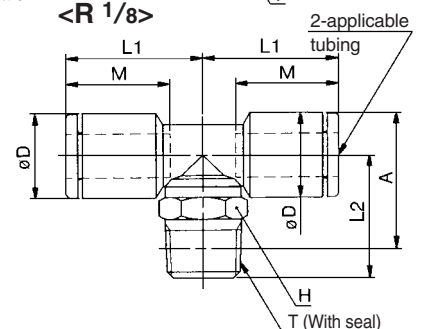
Applicable tubing O.D. (mm)	Connection thread T	Model	H (width across flats)	(Note) ϕD	L1	L2	A	M	Effective area (mm ²)		Weight (g)
									Nylon	Urethane	
3.2	M3 x 0.5	KJT23-M3	7	8.4	15.3	12.5	14.1	12.7	0.9	0.9	2.8
	M5 x 0.8	KJT23-M5	10			13.2	14.3		3.2	2.7	3.2
	R 1/8	KJT23-01S	10			15.2	15.4*		7.4		
4	M3 x 0.5	KJT04-M3	7	9.3	15.6	13	15.1	12.7	0.9	0.9	3.1
	M5 x 0.8	KJT04-M5	10			13.7	15.3		4.5	4.5	3.5
	R 1/8	KJT04-01S	10			15.7	16.4*		7.7		
6	M5 x 0.8	KJT06-M5	7	11.6	16.1	14.7	17.4	13.5	4.5	4.5	4.4
	R 1/8	KJT06-01S	10		17.8	16.7	18.5*		11	11	7.6

* Reference dimensions after R thread installation.
Note) ϕD : Max. diameter

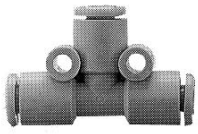
<M3, M5>



<R 1/8>

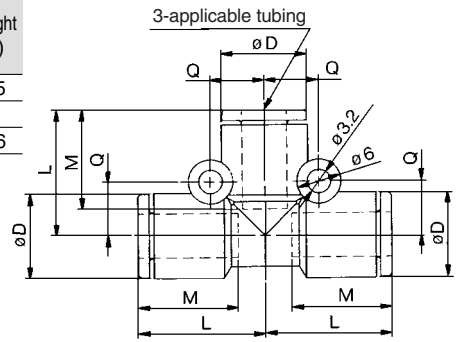


Union Tee: KJT

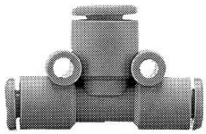


Applicable tubing O.D. (mm)	Model	Note) ϕD	L	Q	M	Effective area (mm ²)		Weight (g)
						Nylon	Urethane	
3.2	KJT23-00	8.4	15	5.8	12.7	3.2	2.7	2.5
4	KJT04-00	9.3	15.8	6.3	12.7	4.5	4.5	3
6	KJT06-00	11.6	17.1	7.3	13.5	11	11	4.6

Note) ϕD : Max. diameter

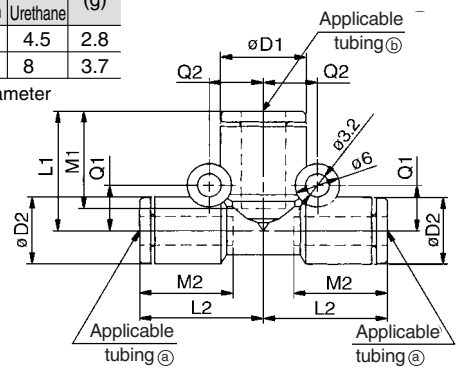


Different Diameter Tee: KJT



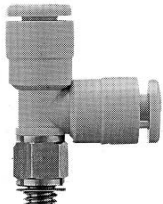
Applicable tubing O.D. (mm)		Model	Note) $\phi D1$	Note) $\phi D2$	L1	L2	Q1	Q2	M1	M2	Effective area (mm ²)		Weight (g)
a	b										Nylon	Urethane	
3.2	4	KJT23-04	9.3	8.4	15.3	15.8	5.8	6.3	12.7	12.7	4.5	4.5	2.8
4	6	KJT04-06	11.6	9.3	16.6	16.8	6.3	7.3	13.5	12.7	8	8	3.7

Note) $\phi D1, \phi D2$: Max. diameter

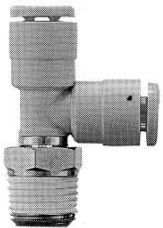


Male Run Tee: KJY

<M3, M5>



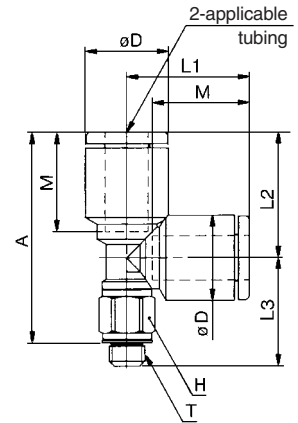
<R 1/8>



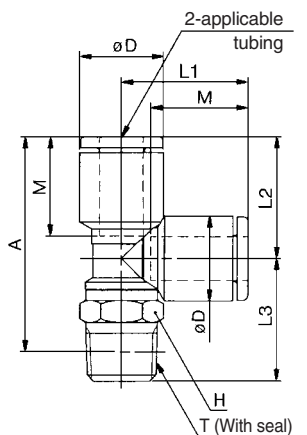
Applicable tubing O.D. (mm)	Connection thread T	Model	H (width across flats)	Note) ϕD	L1	L2	L3	A	M	Effective area (mm ²)		Weight (g)
										Nylon	Urethane	
3.2	M3 x 0.5	KJY23-M3	7	8.4	15.4	14.8	12.5	24.7	12.7	0.9	0.9	2.8
	M5 x 0.8	KJY23-M5								3.2	2.7	7.4
	R 1/8	KJY23-01S								15.2	26*	
4	M3 x 0.5	KJY04-M3	7	9.3	15.6	14.8	13	25.2	12.7	0.9	0.9	3.1
	M5 x 0.8	KJY04-M5								4.5	4.5	3.5
	R 1/8	KJY04-01S								15.7	26.5*	7.7
6	M5 x 0.8	KJY06-M5	7	11.6	17.1	17.1	14.7	28.7	13.5	4.5	4.5	4.5
	R 1/8	KJY06-01S								17.5	16.6	16.7

* Reference dimensions after R thread installation.
Note) ϕD : Max. diameter

<M3, M5>

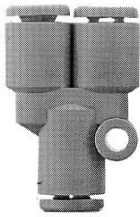


<R 1/8>



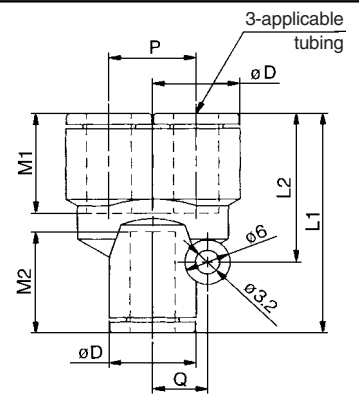
Series KJ

Union "Y": KJU

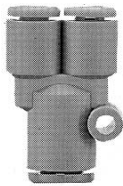


Applicable tubing O.D. (mm)	Model	Note) øD	L1	L2	P	Q	M1	M2	Effective area (mm ²)		Weight (g)
									Nylon	Urethane	
3.2	KJU23-00	8.4	28.5	19	8.4	5.8	12.7	12.9	3.2	2.7	2.6
4	KJU04-00	9.3	27.9	18.3	9.3	6.3	12.7	12.9	4.5	4.5	3
6	KJU06-00	11.6	31.2	21.6	11.6	7.3	13.5	13.7	11	11	4.7

Note) øD: Max. diameter

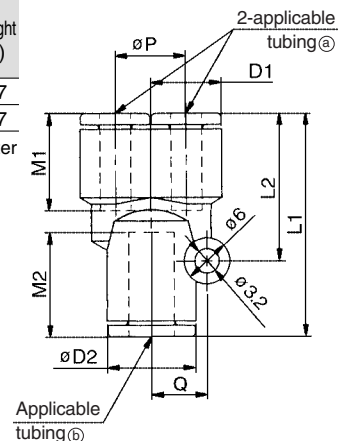


Different Diameter Union "Y": KJU



Applicable tubing O.D. (mm)		Model	Note) øD1	Note) øD2	L1	L2	P	Q	M1	M2	Effective area (mm ²)		Weight (g)
a	b										Nylon	Urethane	
3.2	4	KJU23-04	8.4	9.3	27.5	18.3	8.4	6.3	12.7	12.9	4.5	4.5	2.7
4	6	KJU04-06	9.3	11.6	29.2	19.3	9.3	7.3	12.7	13.7	8	8	3.7

Note) øD1, øD2: Max. diameter

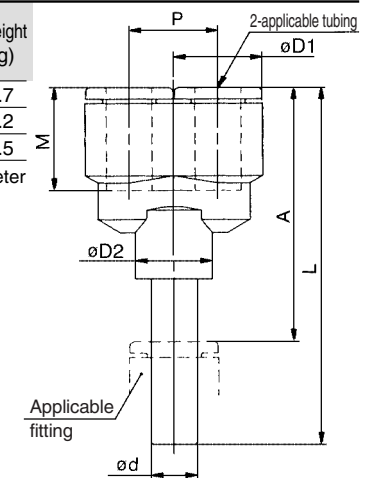


Plug-in "Y": KJU

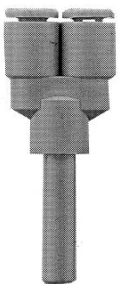


Applicable tubing O.D. (mm)	Applicable fitting size ød	Model	Note) øD1	øD2	L	P	A	M	Effective area (mm ²)		Weight (g)
									Nylon	Urethane	
3.2	3.2	KJU23-99	8.4	10	43.5	8.4	34.1	12.7	3.2	2.7	2.7
4	4	KJU04-99	9.3	10	44.7	9.3	35.3	12.7	4.5	4.5	3.2
6	6	KJU06-99	11.6	10	47.8	11.6	37.6	13.5	11	11	4.5

Note) øD1: Max. diameter

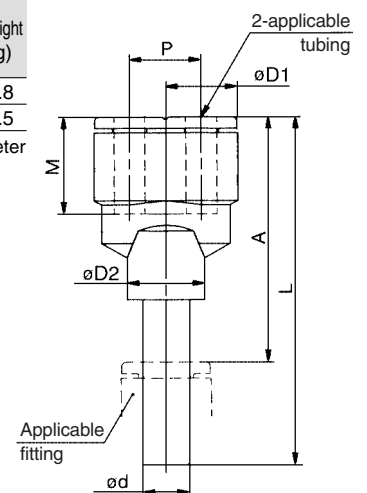


Different Diameter Plug-in "Y": KJX



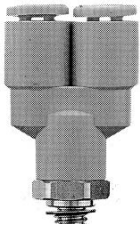
Applicable tubing O.D. (mm)	Applicable fitting size ød	Model	Note) øD1	øD2	L	P	A	M	Effective area (mm ²)		Weight (g)
									Nylon	Urethane	
3.2	4	KJX23-04	8.4	10	44	8.4	34.6	12.7	4.5	4.5	2.8
4	6	KJX04-06	9.3	10	45.7	9.3	35.5	12.7	8	8	3.5

Note) øD1: Max. diameter

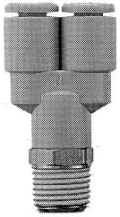


Branch: KJU

<M5>



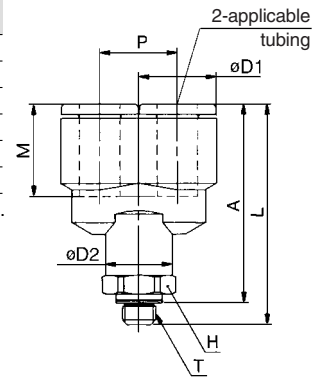
<R 1/8>



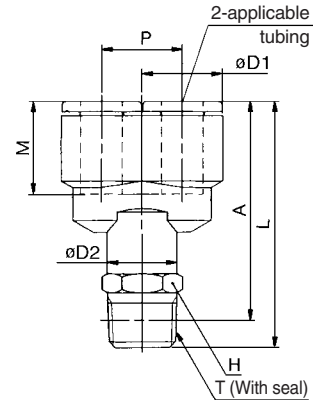
Applicable tubing O.D. (mm)	Connection thread T	Model	H (width across flats)	Note) øD1	øD2	L	P	A	M	Effective area (mm ²)		Weight (g)
										Nylon	Urethane	
3.2	M5 x 0.8	KJU23-M5	10	8.4	10	30.6	8.4	27.5	12.7	2.2	2.2	5.9
	R 1/8	KJU23-01S								3.2	2.7	8.3
4	M5 x 0.8	KJU04-M5	10	9.3	10	31.3	9.3	28.2	12.7	2.2	2.2	6.4
	R 1/8	KJU04-01S								4.5	4.5	8.8
6	M5 x 0.8	KJU06-M5	10	11.6	10	33.4	11.6	30.3	13.5	2.2	2.2	7.4
	R 1/8	KJU06-01S								11	11	9.9

* Reference dimensions after R thread installation.
Note) øD: Max. diameter

<M5>



<R 1/8>

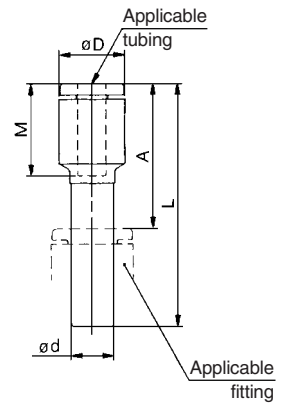


Plug-in Reducer: KJR



Applicable tubing O.D. (mm)	Applicable fitting size ød	Model	Note) øD	L	A	M	Effective area (mm ²)		Weight (g)
							Nylon	Urethane	
3.2	4	KJR23-04	8.4	32	19.3	12.7	3	2.5	0.9
	6	KJR23-06		33	19.5		1.1		
4	6	KJR04-06	9.3	33.5	20	12.7	4	4	1.3

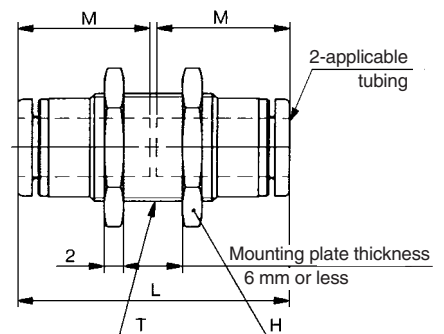
Note) øD: Max. diameter



Bulkhead Union: KJE



Applicable tubing O.D. (mm)	Model	T	H (width across flats)	L	Mounting hole	M	Effective area (mm ²)		Weight (g)
							Nylon	Urethane	
3.2	KJE23-00	M8 x 0.75	10	26	9	12.7	3	2.5	4.6
4	KJE04-00	M9 x 0.75	11	26	10	12.7	4	4	5.6
6	KJE06-00	M11 x 0.75	14	27.7	12	13.5	10	10	8.5

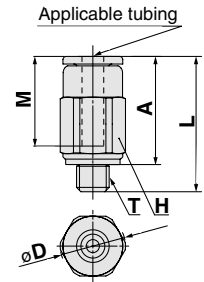


Series KJ

Male connector KJH



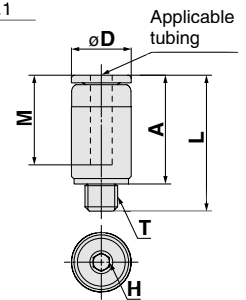
Applicable tubing O.D. (mm)	Model	T Connection thread	H (Width across flats)	øD	L	A	M	Effective area (mm ²)	Weight (g)
2	KJH02-M3	M3 x 0.5	5.5	6	12.5	10	8.8	0.9	1.1
	KJH02-M5	M5 x 0.8	7	7.8	11.7	8.7	8.8	0.9	1.9



Hexagon socket head male connector KJS



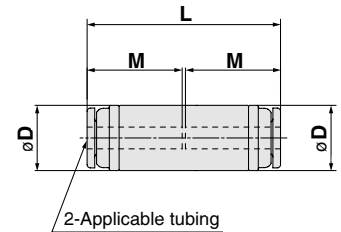
Applicable tubing O.D. (mm)	Model	T Connection thread	H (Width across flats)	øD	L	A	M	Effective area (mm ²)	Weight (g)
2	KJS02-M3	M3 x 0.5	1.5	5.5	12.5	10	8.8	0.9	1.1



Straight union KJH



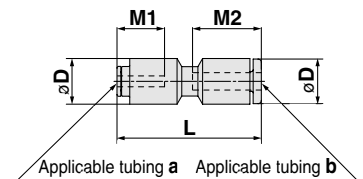
Applicable tubing O.D. (mm)	Model	øD1	L	M	Effective area (mm ²)	Weight (g)
2	KJH02-00	6	17.8	8.8	0.8	1.0



Different diameter straight: KJH



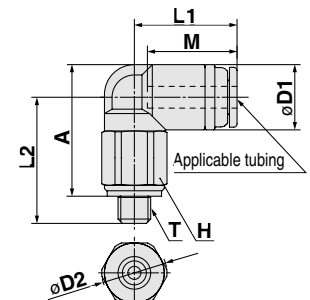
Applicable tubing O.D. (mm)		Model	øD	L	M1	M2	Effective area (mm ²)	Weight (g)
a	b							
2	3.2	KJH02-23	8.4	26.6	8.8	12.7	0.9	2.4
	4	KJH02-04	9.3	26.6	8.8	12.7	0.9	3.2



Male elbow KJL



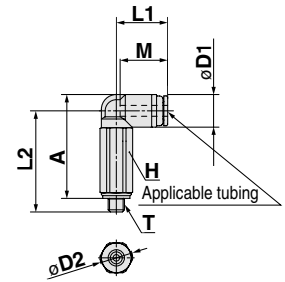
Applicable tubing O.D. (mm)	Model	T Connection thread	H (Width across flats)	øD1	øD2	L1	L2	A	M	Effective area (mm ²)	Weight (g)
2	KJL02-M3	M3 x 0.5	5.5	6	6	9.5	11.6	12.1	8.8	0.8	1.4
	KJL02-M5	M5 x 0.8	7	6	7.8	9.5	12.1	12.1	8.8	0.8	2.4



Extended male elbow KJW



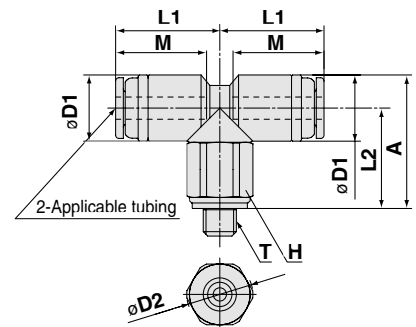
Applicable tubing O.D. (mm)	Model	T Connection thread	H (Width across flats)	$\phi D1$	$\phi D2$	L1	L2	A	M	Effective area (mm ²)	Weight (g)
2	KJW02-M3	M3 x 0.5	5.5	6	6	9.5	18.6	19.1	8.8	0.8	2.6
	KJW02-M5	M5 x 0.8	7	6	7.8	9.5	19.1	19.1	8.8	0.8	4.5



Male branch tee KJT



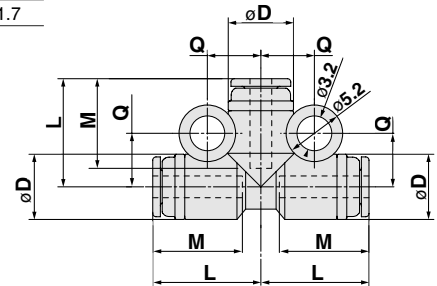
Applicable tubing O.D. (mm)	Model	T Connection thread	H (Width across flats)	$\phi D1$	$\phi D2$	L1	L2	A	M	Effective area (mm ²)	Weight (g)
2	KJT02-M3	M3 x 0.5	5.5	6	6	9.5	11.6	12.1	8.8	1.1	1.8
	KJT02-M5	M5 x 0.8	7	6	7.8	9.5	12.1	12.1	8.8	1.1	2.8



Union tee KJT



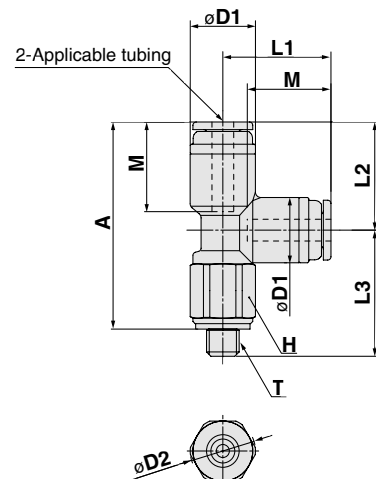
Applicable tubing O.D. (mm)	Model	ϕD	L	Q	M	Effective area (mm ²)	Weight (g)
2	KJT02-00	6	10	4.9	8.8	0.9	1.7



Male branch tee KJY



Applicable tubing O.D. (mm)	Model	T Connection thread	H (Width across flats)	$\phi D1$	$\phi D2$	L1	L2	L3	A	M	Effective area (mm ²)	Weight (g)
2	KJY02-M3	M3 x 0.5	5.5	6	6	10	10	11.6	19.1	8.8	1.1	1.9
	KJY02-M5	M5 x 0.8	7	6	7.8	10	10	12.1	19.1	8.8	1.3	2.9

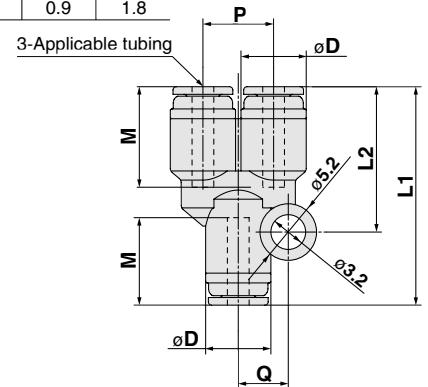


Series KJ

Union "Y" KJU



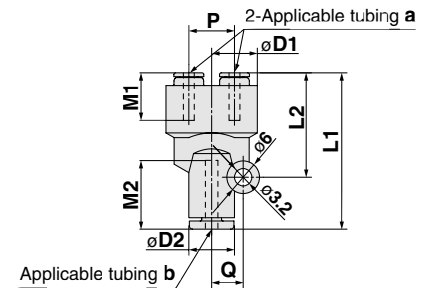
Applicable tubing O.D. (mm)	Model	øD	L1	L2	P	Q	M	Effective area (mm ²)	Weight (g)
2	KJU02-00	6	20.1	13.4	6.5	4.6	8.8	0.9	1.8



Different diameter union "Y" KJU



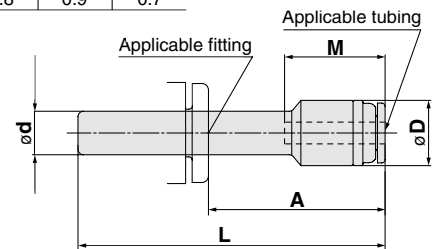
Applicable tubing O.D. (mm)		Model	øD1	øD2	L1	L2	P	Q	M1	M2	Effective area (mm ²)	Weight (g)
a	b											
2	3.2	KJU02-23	6	6	28.8	19.2	8.4	5.8	8.8	12.7	1.5	4.7
	4	KJU02-04	6	7.8	28.2	18.5	9.3	6.3	8.8	12.7	1.6	6.0



Plug-in reducer KJR



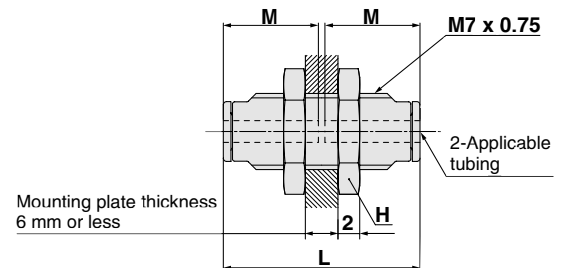
Applicable tubing O.D. (mm)	Model	Applicable fitting size ød	øD	L	A	M	Effective area (mm ²)	Weight (g)
2	KJR02-04	4	6	28.3	15.6	8.8	0.9	0.7



Bulkhead union KJE



Applicable tubing O.D. (mm)	Model	Connection thread	H (Width across flats)	L	Mounting hole	M	Effective area (mm ²)	Weight (g)
2	KJE02-00	M7 x 0.75	9	18.1	8	8.8	0.8	3.7



Plug KJP



Applicable tubing O.D. (mm) ød	Model	øD	L	A	Weight (g)
2	KJP-02	3	17	8.2	0.1

