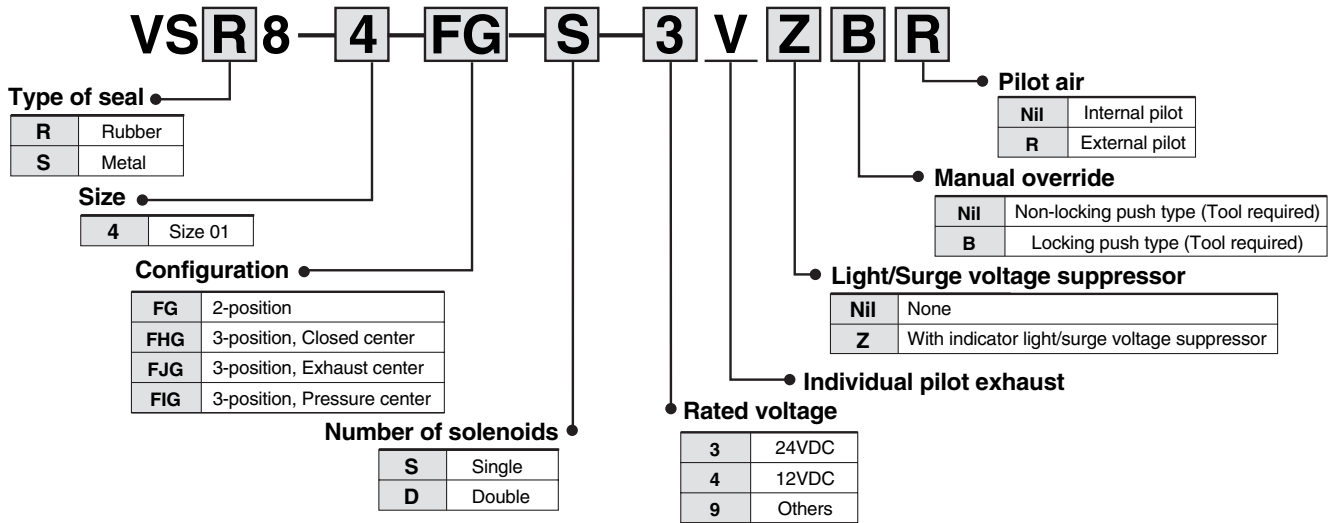


Series VSR/VSS8-4

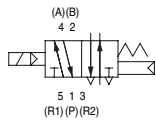
How to Order Valve (ISO15407-2)



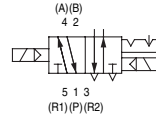
Standard Specifications

Symbol

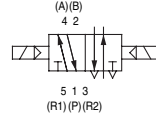
2-position single



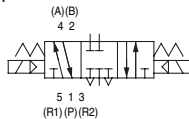
2-position double (metal)



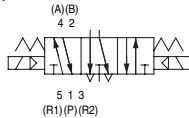
2-position double (rubber)



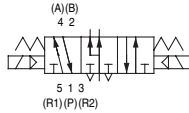
3-position closed center



3-position exhaust center



3-position pressure center



Valve specifications	Valve type		Metal seal	Rubber seal
	Fluid			
Internal pilot Operating pressure range	Single	0.1 to 1.0 MPa		0.15 to 1.0 MPa
	Double	0.1 to 1.0 MPa		0.1 to 1.0 MPa
	3-position	0.15 to 1.0 MPa		0.2 to 1.0 MPa
External pilot Note 1) Operating/Pilot pressure range	Operating pressure range		-100 kPa to 1.0 MPa	
	Pilot pressure range	Single	0.1 to 1.0 MPa	0.15 to 1.0 MPa
		Double	0.1 to 1.0 MPa	0.1 to 1.0 MPa
3-position	0.15 to 1.0 MPa	0.2 to 1.0 MPa		
Ambient and fluid temperature			-10 to 60C Note 2)	-5 to 60C Note 2)
Lubrication	Not required (non-lube type)			
Manual override	Push type (tool required)			
Impact resistance/Vibration resistance	150, 30ms ² Note 3)			
Enclosure	IP65 (Dust/Splashproof type)			
Electric specifications	Rated coil voltage		12VDC, 24VDC	
	Allowable voltage fluctuation		10% of rated voltage	
	Type of coil insulation		Equivalent to class B	
	Power consumption (Current)	24VDC	1W DC (42mA)	
12VDC		1W DC (83mA)		

Note 1) Operating pressure Pilot pressure

Note 2) Use dry air to prevent condensation at low temperatures.

Note 3) **Impact resistance:** No malfunction resulted during an impact test using a drop impact tester. The test was performed one time each in the axial and right angle directions of the main valve and armature for both energized and de-energized conditions.

Vibration resistance: No malfunction resulted during an one-sweep test between 8.3 and 2000Hz. The test was performed in the axial and right angle directions of the main valve and armature for both energized and de-energized conditions.

Flow Rate Characteristics

Position		Seal	VSR/S8-4					
			1→4, 2 (P→A, B)			4, 2→5, 3 (A, B→EA, EB)		
			C	b	Cv	C	b	Cv
2-position	Single	Metal	3.10	0.10	0.60	3.40	0.10	0.70
		Rubber	3.60	0.28	0.90	4.20	0.20	1.00
	Double	Metal	3.10	0.10	0.60	3.40	0.10	0.70
		Rubber	3.60	0.28	0.90	4.20	0.20	1.00
3-position	Closed center	Metal	3.10	0.10	0.60	3.20	0.10	0.60
		Rubber	3.20	0.34	0.80	4.20	0.30	1.00
	Exhaust center	Metal	2.70	0.10	0.60	3.30	0.10	0.70
		Rubber	3.10	0.26	0.80	4.00	0.25	1.10
	Pressure center	Metal	3.20	0.10	0.70	3.20	0.10	0.60
		Rubber	4.40	0.25	1.00	3.60	0.25	1.00