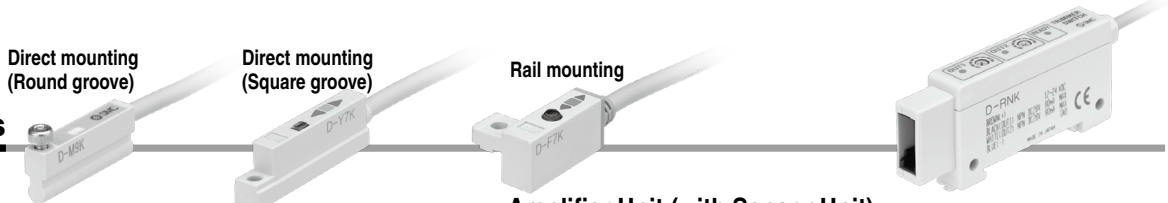


# Trimmer Auto Switch

# D-M9K/D-□7K/D-R□K



## Specifications

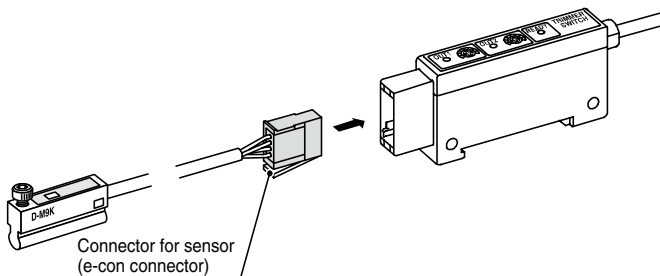


### Sensor Unit

Auto switch model	D-M9K	D-Y7K	D-F7K
<b>Mounting</b>	Direct mounting (Round groove)	Direct mounting (Square groove)	Rail mounting
<b>Applicable amplifier unit</b>	D-RNK, D-RPK		
<b>Indicator lamp</b>	Red lights ON at sensitive position. Green lights ON at optimum detecting position.		
<b>Electrical entry</b>	Grommet		
<b>Impact resistance</b>	980 m/s <sup>2</sup>		
<b>Insulation resistance</b>	50 MΩ or more (500 VDC measured via megohmmeter) between lead wire and case		
<b>Withstand voltage</b>	1000 VAC for 1 minute (between lead wire and case)		
<b>Ambient temperature</b>	-10 to 60°C		
<b>Enclosure</b>	IP67		
<b>Weight (with connector)</b>	55 g	58 g	
<b>Standard</b>	CE Marking		

### Oilproof Heavy-duty Cable

Auto switch model		D-M9K	D-Y7K	D-F7K
<b>Sheath</b>	<b>Outside diameter [mm]</b>	ø3.5		
<b>Insulator</b>	<b>Number of cores</b>	4 cores (Brown/Blue/Black/White)		
	<b>Outside diameter [mm]</b>	ø1.0		
<b>Conductor</b>	<b>Effective area [mm<sup>2</sup>]</b>	0.15 (AWG26)		
	<b>Strand diameter [mm]</b>	ø0.08		
<b>Minimum bending radius [mm] (Reference value)</b>		21		

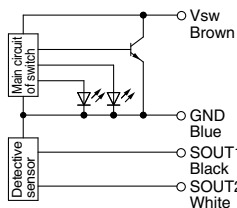


Note) The connector for sensor (e-con connector) is not attached to the lead wire. It will be supplied loose in the same shipment (1 pc.).

## Internal Circuit

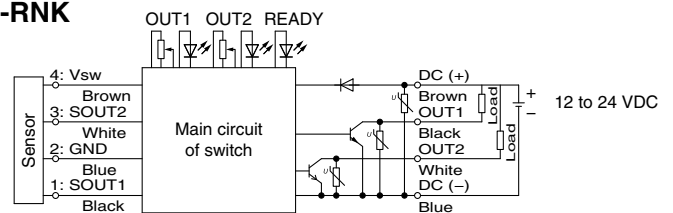
### Sensor Unit

#### D-M9K/D-□7K



### Amplifier Unit

#### D-RNK



#### D-RPK

