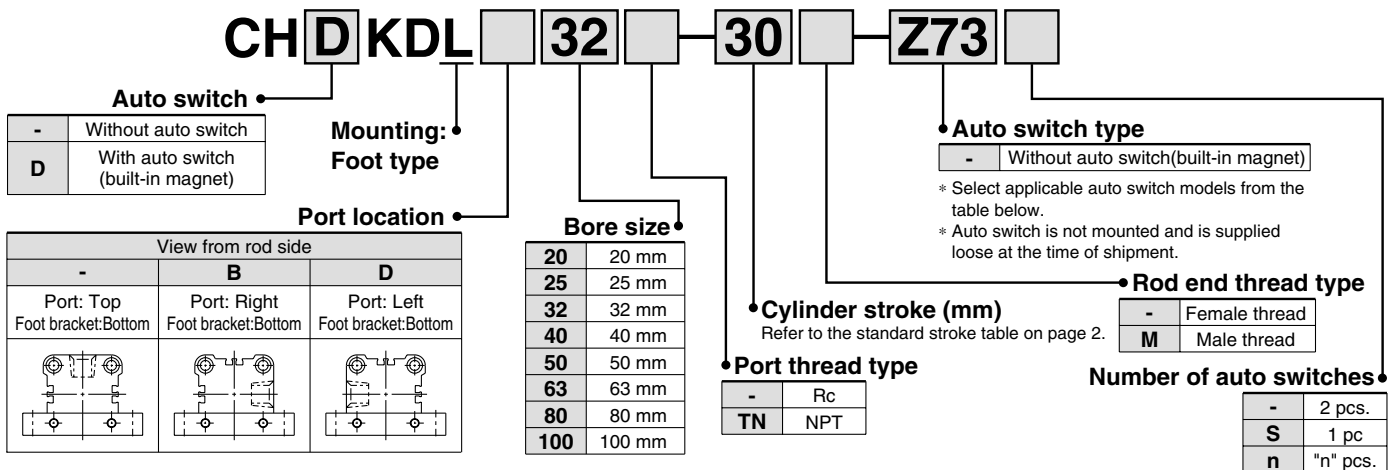
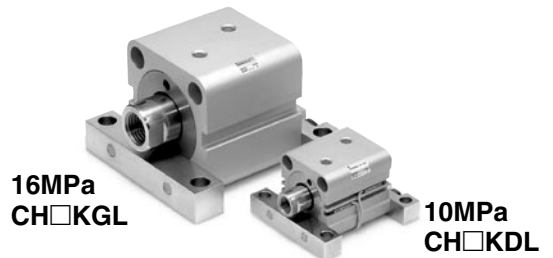


## Compact Hydraulic Cylinder

### Series CH□KDL (10MPa) / CH□KGL (16MPa)

**Mounting Bracket : Foot type is added.**  
**Possible to select the position of the cylinder port in reference to the bracket.**

### How to Order



**Applicable Auto Switches:** Refer to "Best Pneumatics" for further details on each auto switch.

#### Bore sizes ø20 and ø25

Type	Special function	Electrical entry	Indicator light	Wiring (output)	Load voltage			Auto switch type		Lead wire length (m) <sup>(Note)</sup>			Applicable load	
					DC	AC	Electrical entry	0.5 (Nil)	3 (L)	5 (Z)	IC circuit	Relay PLC		
													Perpendicular	In-line
Reed switch	—	Grommet	No	2-wire	24V	5V, 12V	100V or less	<b>A90V</b>	<b>A90</b>	●	●	—	—	—
			Yes	3-wire (NPN equiv.)	—	5V	—	<b>A93V</b>	<b>A93</b>	●	●	—	—	—
			Yes	3-wire (NPN)	—	5V, 12V	—	<b>A96V</b>	<b>A96</b>	●	●	—	—	—
Solid state switch	—	Grommet	No	3-wire (NPN)	24V	5V, 12V	—	<b>M9NV</b>	<b>M9N</b>	●	●	○	—	—
			Yes	3-wire (PNP)				<b>M9PV</b>	<b>M9P</b>	●	●	○	—	—
			Yes	2-wire				<b>M9BV</b>	<b>M9B</b>	●	●	○	—	—
	Diagnostic indication (2-colour display)	Grommet	No	3-wire (NPN)	24V	5V, 12V	—	<b>F9NWV</b>	<b>F9NW</b>	●	●	○	—	—
			Yes	3-wire (PNP)				<b>F9PWV</b>	<b>F9PW</b>	●	●	○	—	—
			Yes	2-wire				<b>F9BWV</b>	<b>F9BW</b>	●	●	○	—	—
Water resistant (2-colour display)	—	—	2-wire	—	12V	—	<b>F9BA</b>	—	●	○	—	—		

#### Bore sizes ø32 to ø100

Type	Special function	Electrical entry	Indicator light	Wiring (output)	Load voltage			Auto switch type		Lead wire length (m) <sup>(Note)</sup>			Applicable load	
					DC	AC	Electrical entry	0.5 (Nil)	3 (L)	5 (Z)	IC circuit	Relay PLC		
													Perpendicular	In-line
Reed switch	—	Grommet	Yes	3-wire (NPN equiv.)	—	5V	—	—	<b>Z76</b>	●	●	—	—	—
			No	2-wire	24V	12V	100V	—	<b>Z73</b>	●	●	●	—	—
			No	2-wire	—	5V, 12V	100V or less	—	<b>Z80</b>	●	●	—	—	—
Solid state switch	—	Grommet	No	3-wire (NPN)	24V	5V, 12V	—	<b>Y69A</b>	<b>Y59A</b>	●	●	○	—	—
			Yes	3-wire (PNP)				<b>Y7PV</b>	<b>Y7P</b>	●	●	○	—	—
			Yes	2-wire				<b>Y69B</b>	<b>Y59B</b>	●	●	○	—	—
	Diagnostic indication (2-colour display)	Grommet	No	3-wire (NPN)	24V	5V, 12V	—	<b>Y7NWV</b>	<b>Y7NW</b>	●	●	○	—	—
			Yes	3-wire (PNP)				<b>Y7PWV</b>	<b>Y7PW</b>	●	●	○	—	—
			Yes	2-wire				<b>Y7BWV</b>	<b>Y7BW</b>	●	●	○	—	—
Water resistant (2-colour display)	—	—	2-wire	—	12V	—	<b>Y7BA</b>	—	●	○	—	—		

(Note) Lead wire length symbols: 0.5m ..... Nil (Example) Y59A  
 3m ..... L (Example) Y59AL  
 5m ..... Z (Example) Y59AZ  
 \* Solid state switches marked "○" are produced upon receipt of order.

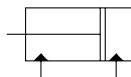
# Series CH□KDL

- Light and compact aluminum body.
- Auto switch can be mounted.
- Auto switch mounting does not affect overall length.
- A wide range of operating pressures, bore sizes, and standard strokes make wide selections possible.

JIS symbol



P.4



## Standard strokes

Bore sizes (mm)	Standard strokes (mm)
<b>20 &amp; 25</b>	5, 10, 15, 20, 25, 30, 35, 40, 45, 50
<b>32</b>	5, 10, 15, 20, 25, 30, 35, 40, 45, 50, 75
<b>40, 50, 63, 80, 100</b>	5, 10, 15, 20, 25, 30, 35, 40, 45, 50, 75, 100

## Manufacture of Intermediate Stroke Cylinders

Intermediate strokes in 5mm increments can be manufactured by installing spacers inside standard stroke cylinders. 55, 60, 65 and 70mm stroke cylinders have the same overall length as a 75mm stroke cylinder, and 80, 85, 90 and 95mm stroke cylinders have the same length as a 100mm stroke cylinder.

Refer to the Made to Order Specifications on page 4 for the ordering procedure.

## Hydraulic Fluid Compatibility

Standard mineral hydraulic fluid	Compatible
W/O hydraulic fluid	Compatible
O/W hydraulic fluid	Compatible
Water/Glycol hydraulic fluid	*
Phosphate hydraulic fluid	Not compatible

\* Contact SMC.

## Minimum Strokes for Auto Switch Mounting

ø20 & ø25

(mm)

No. of auto switches	Auto switch type			
	D-A9□ D-A9□V	D-F9□W D-F9□WV	D-M9□ D-M9□V	D-F9BAL
1 pc.	5	5	5	20
2 pcs.	10	10	5	20

ø32 to ø100

(mm)

No. of auto switches	Auto switch type			
	D-Z7 D-Z8	D-Y5 D-Y7 D-Y7□V	D-Y6 D-Y7□W D-Y7□WV	D-Y7BAL
1 pc.	5	5	10	15
2 pcs.	10	5	10	15

## Theoretical Output

Unit: N

Bore size (mm)	Rod size (mm)	Operating direction	Piston area (mm <sup>2</sup> )	Operating pressure (MPa)		
				3.5	7	10
<b>20</b>	12	OUT	314	1099	2198	3140
		IN	201	704	1407	2010
<b>25</b>	14	OUT	490	1715	3430	4900
		IN	336	1176	2352	3360
<b>32</b>	18	OUT	804	2814	5628	8040
		IN	549	1922	3843	5490
<b>40</b>	22.4	OUT	1256	4396	8792	12560
		IN	862	3017	6034	8620
<b>50</b>	28	OUT	1963	6871	13741	19630
		IN	1347	4715	9429	13470
<b>63</b>	35.5	OUT	3117	10910	21819	31170
		IN	2127	7445	14889	21270
<b>80</b>	45	OUT	5026	17591	35182	50260
		IN	3436	12026	24052	34360
<b>100</b>	56	OUT	7853	27486	54971	78530
		IN	5390	18865	37730	53900

Theoretical output (N) = Pressure (MPa) x Piston area (mm<sup>2</sup>)

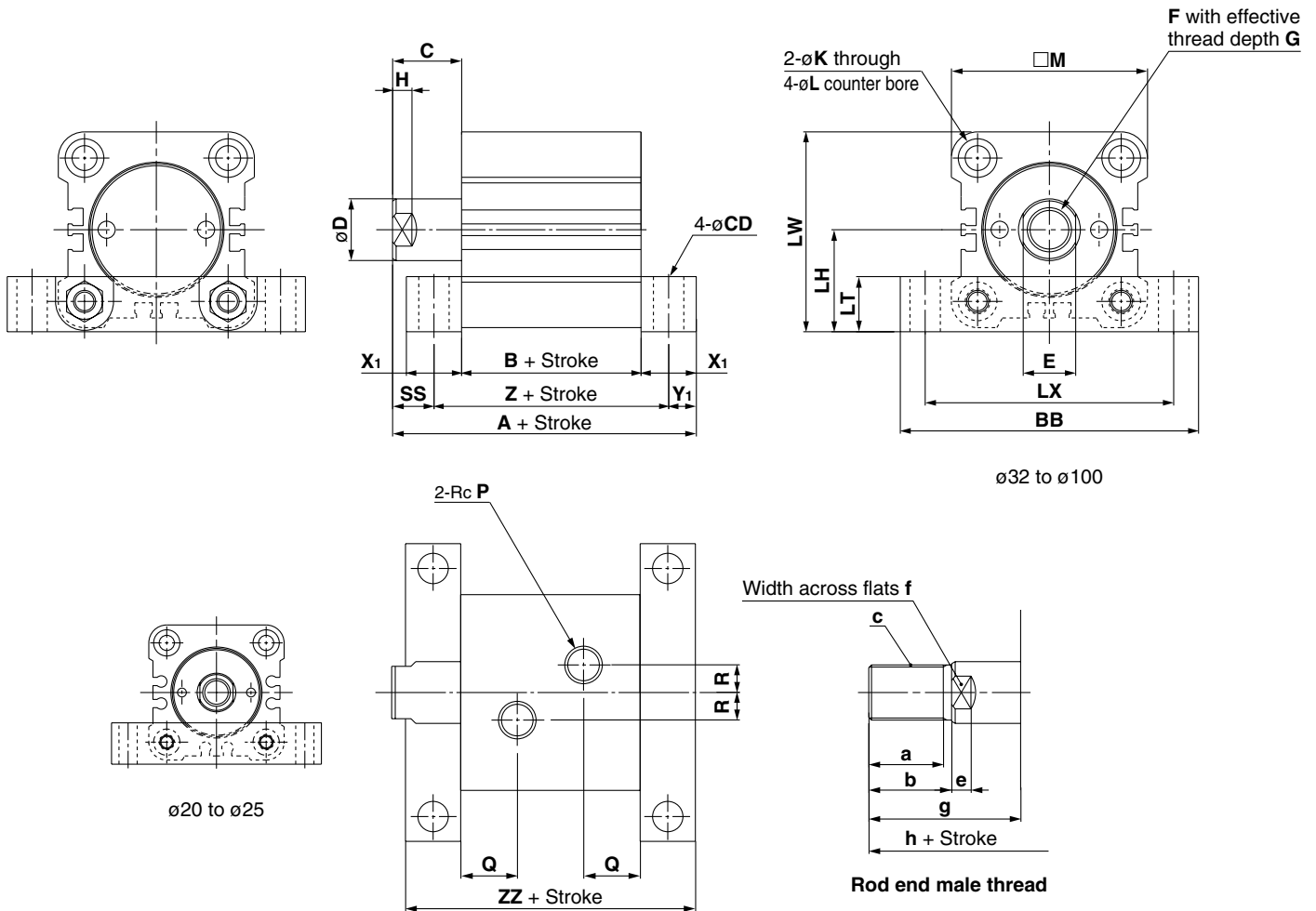
## Weights

### CH□KDL

Units: g

Bore size (mm)	Standard stroke (mm)											
	5	10	15	20	25	30	35	40	45	50	75	100
<b>20</b>	465	490	510	535	560	580	605	630	650	675	—	—
<b>25</b>	570	600	630	660	690	720	750	780	810	840	—	—
<b>32</b>	880	925	970	1015	1060	1100	1150	1190	1235	1280	1505	1730
<b>40</b>	1375	1435	1495	1550	1610	1670	1725	1785	1845	1900	2195	2485
<b>50</b>	2200	2280	2360	2435	2515	2595	2675	2755	2835	2910	3310	3705
<b>63</b>	3845	3960	4075	4195	4310	4425	4545	4660	4775	4895	5475	6060
<b>80</b>	6555	6725	6900	7235	7410	7580	7755	7930	8100	8275	9150	10010
<b>100</b>	11355	11610	11865	12120	12375	12630	12885	13140	13400	13655	14930	16210

**Dimensions**



Bore size (mm)	A	B	BB	C	CD	D	E	F	G	H	K	L	LH	LT	LX
20	76	43	70	18	6.6	12	10	M8	10	6	5.5	9.5 depth 5.4	23	15	58
25	78	45	76	18	6.6	14	12	M10	12	6	5.5	9.5 depth 5.4	26	15	64
32	86	51	94	19	9	18	14	M12	15	7	6.6	11 depth 6.5	33	16	79
40	98	55	108	23	11	22.4	19	M16	20	7	9	14 depth 8.6	37	20	90
50	111	60	126	27	14	28	24	M20	24	8	11	17.5 depth 10.8	43	24	104
63	130	67	146	33	16	35.5	30	M27	33	9	13	20 depth 13	52	30	121
80	151	78	172	38	18	45	41	M30	36	14	15	23 depth 15.2	63	35	144
100	179	96	208	43	22	56	50	M39	45	21	17	26 depth 17.5	76	40	174

Note) Body dimensions are the same with or without auto switches.

Bore size (mm)	LW	M	P	Q	R	SS	X <sub>1</sub>	Y <sub>1</sub>	Z	ZZ
20	44.5	43	1/8	16.5	6	10.5	15	7.5	58	73
25	50.5	49	1/8	17	8	10.5	15	7.5	60	75
32	64.5	63	1/4	19.5	10	11	16	8	67	83
40	72.5	71	1/4	20.5	10	13	20	10	75	95
50	83.5	81	1/4	22	10	15	24	12	84	108
63	100.5	97	1/4	25.5	10	18	30	15	97	127
80	121.5	117	3/8	30	15	20.5	35	17.5	113	148
100	147	142	3/8	36	15	23	40	20	136	176

Bore size (mm)	a	b	c	e	f	g	h
20	11	15	M10 x 1.25	6	10	33	91
25	14	18	M12 x 1.25	6	12	36	96
32	21	25	M16 x 1.5	7	14	44	111
40	26	30	M20 x 1.5	7	19	53	128
50	31	35	M24 x 1.5	8	24	62	146
63	41	45	M30 x 1.5	9	30	78	175
80	56	60	M39 x 1.5	14	41	98	221
100	71	75	M48 x 1.5	21	50	118	254

# Series CH□KDL Made to Order Specification

Contact SMC for detailed specifications, lead times, and prices.



## Intermediate Stroke Type

Intermediate strokes in 5mm increments can be manufactured by installing spacers inside standard stroke cylinders.

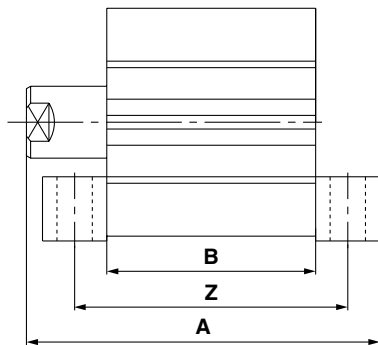
CH□KDL  Bore size   Port thread type  Stroke  Rod end thread type  Auto switch  Quantity  XC63

Intermediate stroke

Strokes	Applicable tube
55, 60, 65, 70	For 75mm stroke
80, 85, 90, 95	For 100mm stroke

## Dimensions

CH□KDL□-□-XC63



Bore size (mm)	Strokes			Strokes		
	55, 60, 65, 70	80, 85, 90, 95		A	B	Z
32	161	126	142	—	—	—
40	173	130	150	198	155	175
50	186	135	159	211	160	184
63	205	142	172	230	167	197
80	226	153	188	251	178	213
100	254	171	211	279	196	236

## With Air Release Valve

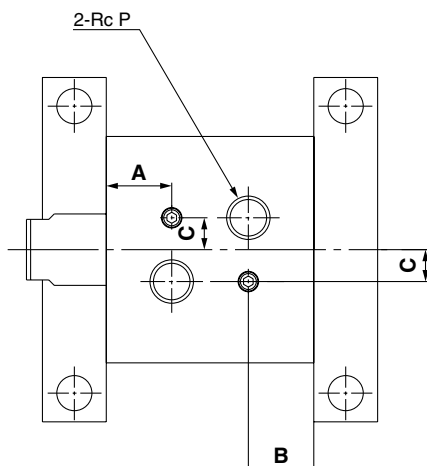
Air release valve are provided on cylinder tube surfaces machined for ports.

CH□KDL  Bore size   Port thread type  Stroke  Rod end thread type  Auto switch  Quantity  XC64

With air release valve

## Dimensions

CH□KDL□-□-XC64



Bore size (mm)	A	B	C
20	16.5	14.5	7
25	17	15	8
32	19.5	17	10
40	20.5	17.5	10
50	22	19.5	10
63	25.5	22	10
80	30	26.5	15
100	36	33	15

Note) Dimensions other than those above are standard.

# Compact Hydraulic Cylinder

# Series CH□KGL

16MPa

∅20, ∅25, ∅32, ∅40, ∅50, ∅63, ∅80, ∅100

## How to Order

**CH** **D** **KGL** **32** **30** **Z73**

**Auto switch**

-	Without auto switch
<b>D</b>	With auto switch (built-in magnet)

**Mounting: Foot type**

**Port location**

View from rod side		
-	<b>B</b>	<b>D</b>
Port: Top Foot bracket:Bottom	Port: Right Foot bracket:Bottom	Port: Left Foot bracket:Bottom

**Bore size**

<b>20</b>	20 mm
<b>25</b>	25 mm
<b>32</b>	32 mm
<b>40</b>	40 mm
<b>50</b>	50 mm
<b>63</b>	63 mm
<b>80</b>	80 mm
<b>100</b>	100 mm

**Port thread type**

-	Rc
<b>TN</b>	NPT

**Number of auto switches**

-	2 pcs.
<b>S</b>	1 pc
<b>n</b>	"n" pcs.

**Auto switch type**

-	Without auto switch(built-in magnet)
---	--------------------------------------

\* Select applicable auto switch models from the table below.  
\* Auto switch is not mounted and is supplied loose at the time of shipment.

**Rod end thread type**

-	Female thread
<b>M</b>	Male thread

**Cylinder stroke (mm)**  
Refer to the standard stroke table on page 6.

**Applicable Auto Switches:** Refer to "Best Pneumatics" for further details on each auto switch.

### Bore sizes ∅20 and ∅25

Type	Special function	Electrical entry	Indicator light	Wiring (output)	Load voltage			Auto switch type		Lead wire length (m) <sup>(Note)</sup>			Applicable load
					DC	AC		Electrical entry	In-line	0.5 (Nil)	3 (L)	5 (Z)	
						5V, 12V, 100V or less	12V						
Reed switch	—	Grommet	No	2-wire	24V	5V, 12V, 100V or less	—	—	—	●	●	—	IC circuit Relay PLC
Solid state switch	—	Grommet	Yes	3-wire (NPN)	24V	5V, 12V	—	—	●	●	○	IC circuit	Relay PLC
				2-wire	5V, 12V	—	●	●	○				
										3-wire (NPN)	12V	—	
				3-wire (PNP)	5V, 12V	—	●	●	○				
										2-wire	12V	—	
				3-wire (NPN)	5V, 12V	—	●	●	○				
										3-wire (PNP)	12V	—	
2-wire	5V, 12V	—	●	●	○								
						—	—	—	—	—	●	○	
F9BWW	F9BW	—	—	—	●								○
						—	F9BA	—	—	—	●	○	

### Auto switch mounting bracket (screws) part nos.

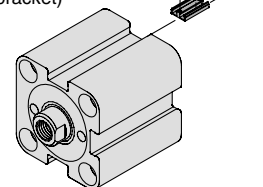
Bore sizes (mm)	Mounting bracket part no.	Applicable switches	
		Reed switches	Solid state switches
20 & 25	BHK1-020	D-A9□ D-A9□V	D-M9□ D-M9□V D-F9□W D-F9□WV D-F9BAL
		D-Y5□ D-Y6□ D-Y7□ D-Y7□V D-Y7□W D-Y7□WV D-Y7BAL	
32 to 100	BHK2-032	D-Z7□ D-Z8□	

### Bore sizes ∅32 to ∅100

Type	Special function	Electrical entry	Indicator light	Wiring (output)	Load voltage			Auto switch type		Lead wire length (m) <sup>(Note)</sup>			Applicable load
					DC	AC		Electrical entry	In-line	0.5 (Nil)	3 (L)	5 (Z)	
						5V, 12V, 100V or less	12V						
Reed switch	—	Grommet	Yes	3-wire (NPN equiv.)	—	5V	—	—	—	●	●	—	IC circuit
Solid state switch	—	Grommet	Yes	3-wire (NPN)	24V	5V, 12V	—	—	●	●	○	IC circuit	Relay PLC
				2-wire	5V, 12V	—	●	●	○				
										3-wire (NPN)	12V	—	
				3-wire (PNP)	5V, 12V	—	●	●	○				
										2-wire	12V	—	
				—	—	—	—	—	●				
										Y7PWW	Y7PW	—	
—	Y7BA	—	—	—	●	○							

M2.5 x 4ℓ  
(included with auto switch)

M3 x 6ℓ  
(included with switch mounting bracket)



Note) Lead wire length symbols: 0.5m ..... Nil (Example) Y59A  
3m ..... L (Example) Y59AL  
5m ..... Z (Example) Y59AZ

\* Solid state switches marked "○" are produced upon receipt of order.

# Series CH□KGL

- Light and compact aluminum body.
- Auto switch can be mounted.
- Auto switch mounting does not affect overall length.
- A wide range of operating pressures, bore sizes, and standard strokes make wide selections possible.

JIS symbol



P.8



## Standard strokes

Bore sizes (mm)	Standard strokes (mm)
<b>20 &amp; 25</b>	5, 10, 15, 20, 25, 30, 35, 40, 45, 50, 75, 100
<b>32</b>	5, 10, 15, 20, 25, 30, 35, 40, 45, 50, 75, 100, 125, 150
<b>40, 50, 63, 80, 100</b>	5, 10, 15, 20, 25, 30, 35, 40, 45, 50, 75, 100, 125, 150, 175

## Manufacture of Intermediate Stroke Cylinders

Intermediate strokes in 5mm increments can be manufactured by installing spacers inside standard stroke cylinders.  
 55-70 mm (5 mm increments) stroke cylinders (SC) have the same overall length as a 75 mm SC.  
 80-95 mm (5 mm increments) SC=100 mm SC  
 105-120 mm (5 mm increments) SC=125 mm SC  
 130-145 mm (5 mm increments) SC=150 mm SC  
 155-170 mm (5 mm increments) SC=175 mm SC  
 Refer to the Made to Order Specifications on page 8 for the ordering procedure.

## Hydraulic Fluid Compatibility

Standard mineral hydraulic fluid	Compatible
W/O hydraulic fluid	Compatible
O/W hydraulic fluid	Compatible
Water/Glycol hydraulic fluid	*
Phosphate hydraulic fluid	Not compatible

\* Contact SMC.

## Minimum Strokes for Auto Switch Mounting

No. of auto switches	Auto switch type (mm)			
	D-A9□ D-A9□V	D-F9□W D-F9□WV	D-M9□ D-M9□V	D-F9BAL
1 pc.	5	5	5	15
2 pcs.	10	10	5	15

No. of auto switches	Auto switch type (mm)			
	D-Z7 D-Z8	D-Y7□W D-Y7□WV	D-Y5 D-Y6 D-Y7	D-Y7□V D-Y7BAL
1 pc.	5	10	5	15
2 pcs.	10	10	5	15

## Theoretical Output

Unit: N

Bore size (mm)	Rod size (mm)	Operating direction	Piston area (mm <sup>2</sup> )	Operating pressure (MPa)			
				3.5	7	10	16
20	12	OUT	314	1099	2198	3140	5024
		IN	201	704	1407	2010	3216
25	14	OUT	490	1715	3430	4900	7840
		IN	336	1176	2352	3360	5376
32	18	OUT	804	2814	5628	8040	12864
		IN	549	1922	3843	5490	8784
40	22.4	OUT	1256	4396	8792	12560	20096
		IN	862	3017	6034	8620	13792
50	28	OUT	1963	6871	13741	19630	31408
		IN	1347	4715	9429	13470	21552
63	35.5	OUT	3117	10910	21819	31170	49872
		IN	2127	7445	14889	21270	34032
80	45	OUT	5026	17591	35182	50260	80416
		IN	3436	12026	24052	34360	54976
100	56	OUT	7853	27486	54971	78530	125648
		IN	5390	18865	37730	53900	86240

Theoretical output (N) = Pressure (MPa) x Piston area (mm<sup>2</sup>)

## Weights

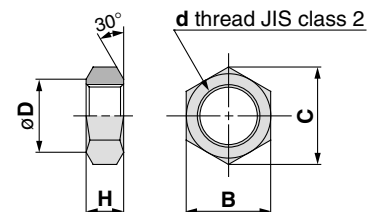
### CH□KGB

Units: g

Bore size (mm)	Standard stroke (mm)														
	5	10	15	20	25	30	35	40	45	50	75	100	125	150	175
20	465	490	515	535	560	580	605	625	650	670	785	890	—	—	—
25	585	610	640	670	700	725	755	785	815	840	985	1130	—	—	—
32	945	990	1040	1085	1130	1175	1220	1265	1310	1360	1585	1815	2045	2270	—
40	1580	1645	1705	1770	1830	1895	1955	2015	2080	2140	2455	2765	3075	3390	3700
50	2495	2580	2665	2750	2835	2915	3000	3085	3170	3255	3675	4095	4515	4935	5355
63	3900	4030	4160	4290	4420	4550	4685	4815	4945	5075	5730	6380	7035	7685	8340
80	7225	7420	7615	7805	8000	8195	8385	8580	8775	8965	9935	10990	11870	12835	13800
100	12425	12710	12990	13275	13555	13840	14120	14405	14685	14970	16385	17795	19210	20625	22035

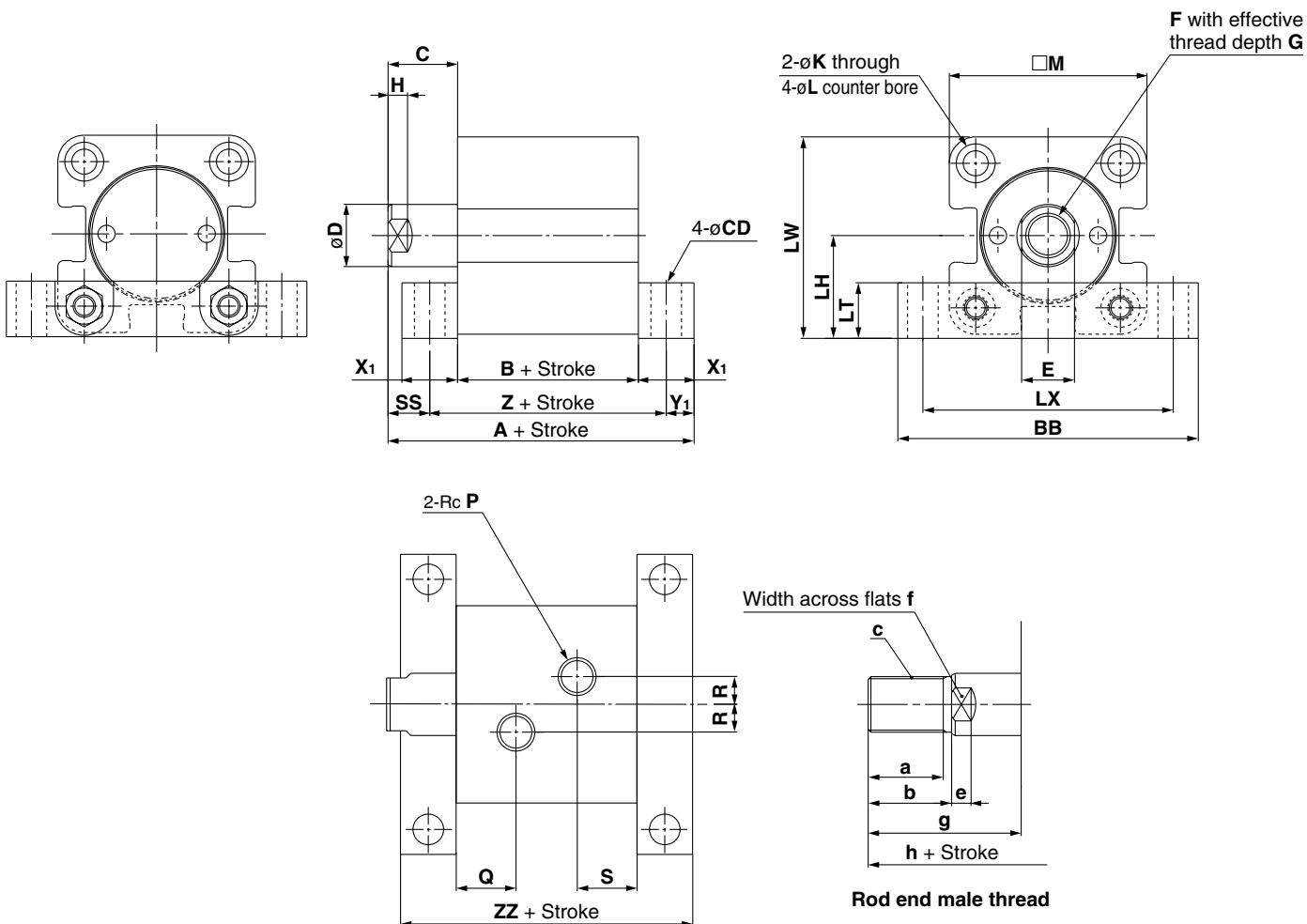
## Optional Parts

### Rod end nut



Part no.	Bore size (mm)	B	C	d	D	H
NTH-025	20	17	19.6	M10 x 1.25	16.5	6
NTH-032	25	19	21.9	M12 x 1.25	18	7
NTH-040	32	22	25.4	M16 x 1.5	21	10
NTH-050	40	27	31.2	M20 x 1.5	26	12
NTH-060	50	32	37	M24 x 1.5	31	14
NTH-080	63	41	47.3	M30 x 1.5	40	17
NTH-100	80	55	63.5	M39 x 1.5	54	20
NTH-125	100	70	80.8	M48 x 1.5	69	26

## Dimensions



Bore size (mm)	A	B	BB	C	CD	D	E	F	G	H	K	L	LH	LT	LX	LW
20	76	43	70	18	6.6	12	10	M8	10	6	5.5	9.5 depth 5.4	23	15	58	44.5
25	78	45	76	18	6.6	14	12	M10	12	6	5.5	9.5 depth 5.4	26	15	64	50.5
32	91	56	94	19	9	18	14	M12	15	7	6.6	11 depth 6.5	33	16	79	64.5
40	108	65	108	23	11	22.4	19	M16	20	7	9	14 depth 8.6	37	20	90	72.5
50	121	70	126	27	14	28	24	M20	24	8	11	17.5 depth 10.8	43	24	104	83.5
63	140	77	146	33	16	35.5	30	M27	33	9	13	20 depth 13	52	30	121	102
80	161	88	172	38	18	45	41	M30	36	14	15	23 depth 15.2	63	35	144	123.5
100	189	106	208	43	22	56	50	M39	45	21	17	26 depth 17.5	76	40	174	149

Note) Body dimensions are the same with or without auto switches.

Bore size (mm)	M	P	Q	R	S	SS	$X_1$	$Y_1$	Z	ZZ
20	43	1/8	16.5	6	11.5	10.5	15	7.5	58	73
25	49	1/8	17	8	12	10.5	15	7.5	60	75
32	63	1/4	19.5	10	19.5	11	16	8	72	88
40	71	1/4	21.5	10	21.5	13	20	10	85	105
50	81	1/4	24	10	24	15	24	12	94	118
63	100	1/4	27.5	10	27.5	18	30	15	107	137
80	121	3/8	31	15	31	20.5	35	17.5	123	158
100	146	3/8	36	15	36	23	40	20	146	186

Bore size (mm)	a	b	c	e	f	g	h
20	11	15	M10 x 1.25	6	10	33	91
25	14	18	M12 x 1.25	6	12	36	96
32	21	25	M16 x 1.5	7	14	44	116
40	26	30	M20 x 1.5	7	19	53	138
50	31	35	M24 x 1.5	8	24	62	156
63	41	45	M30 x 1.5	9	30	78	185
80	56	60	M39 x 1.5	14	41	98	221
100	71	75	M48 x 1.5	21	50	118	264

# Series CH□KGL Made to Order Specification

Contact SMC for detailed specifications, lead times, and prices.



## Intermediate Stroke Type

Intermediate strokes in 5mm increments can be manufactured by installing spacers inside standard stroke cylinders.

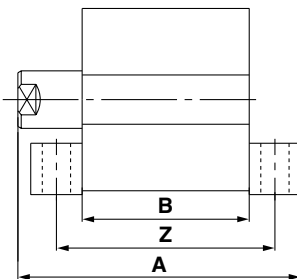
CH□KGL  Bore size  Stroke  Rod end thread type  Auto switch  Quantity  XC63

Port thread type ↓ Intermediate stroke ↓

Strokes	Applicable tube
55, 60, 65, 70	For 75mm stroke
80, 85, 90, 95	For 100mm stroke
105, 110, 115, 120	For 125mm stroke
130, 135, 140, 145	For 150mm stroke
155, 160, 165, 170	For 175mm stroke

## Dimensions

CH□KGL□-□-XC63



Strokes Bore size (mm)	55, 60, 65, 70			80, 85, 90, 95			105, 110, 115, 120			130, 135, 140, 145			155, 160, 165, 170		
	A	B	Z	A	B	Z	A	B	Z	A	B	Z	A	B	Z
32	166	131	147	191	156	172	216	181	197	241	206	222	—	—	—
40	183	140	160	208	165	185	233	190	210	258	215	235	283	240	260
50	196	145	169	221	170	194	246	195	219	271	220	244	296	245	269
63	215	152	182	240	177	207	265	202	232	290	227	257	315	252	282
80	236	163	198	261	188	223	286	213	248	311	238	273	336	263	298
100	264	181	221	289	206	246	314	231	271	339	256	296	364	281	321

## With Air Release Valve

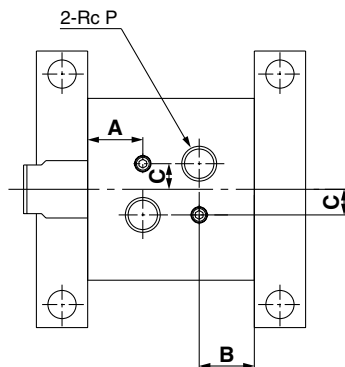
Air release valves are provided on cylinder tube surfaces machined for ports.

CH□KGL  Bore size  Stroke  Rod end thread type  Auto switch  Quantity  XC64

Port thread type ↓ Intermediate stroke ↓

## Dimensions

CH□KGL□-□-XC64



Bore size (mm)	A	B	C
20	16.5	9.5	7
25	17	10	8
32	19.5	17	10
40	21.5	18.5	10
50	24	21.5	10
63	27.5	24	10
80	31	27.5	15
100	36	33	15

Note) Dimensions other than those highlighted above are standard.

## ⚠ Specific Product Precautions

Be sure to read before handling. Refer to "Hydraulic Cylinders" CAT. E111-B for safety instructions, hydraulic cylinder precautions and auto switch precautions.

## Mounting

### ⚠ Caution

When the cylinder body is mounted, use the recommended bolt (Strength level: +0.9 or more) mentioned to the right.

Bore size (mm)	Recommended bolt size	Bore size (mm)	Recommended bolt size
20 & 25	M6	63	M14
32	M8	80	M16
40	M10	100	M20
50	M12		